

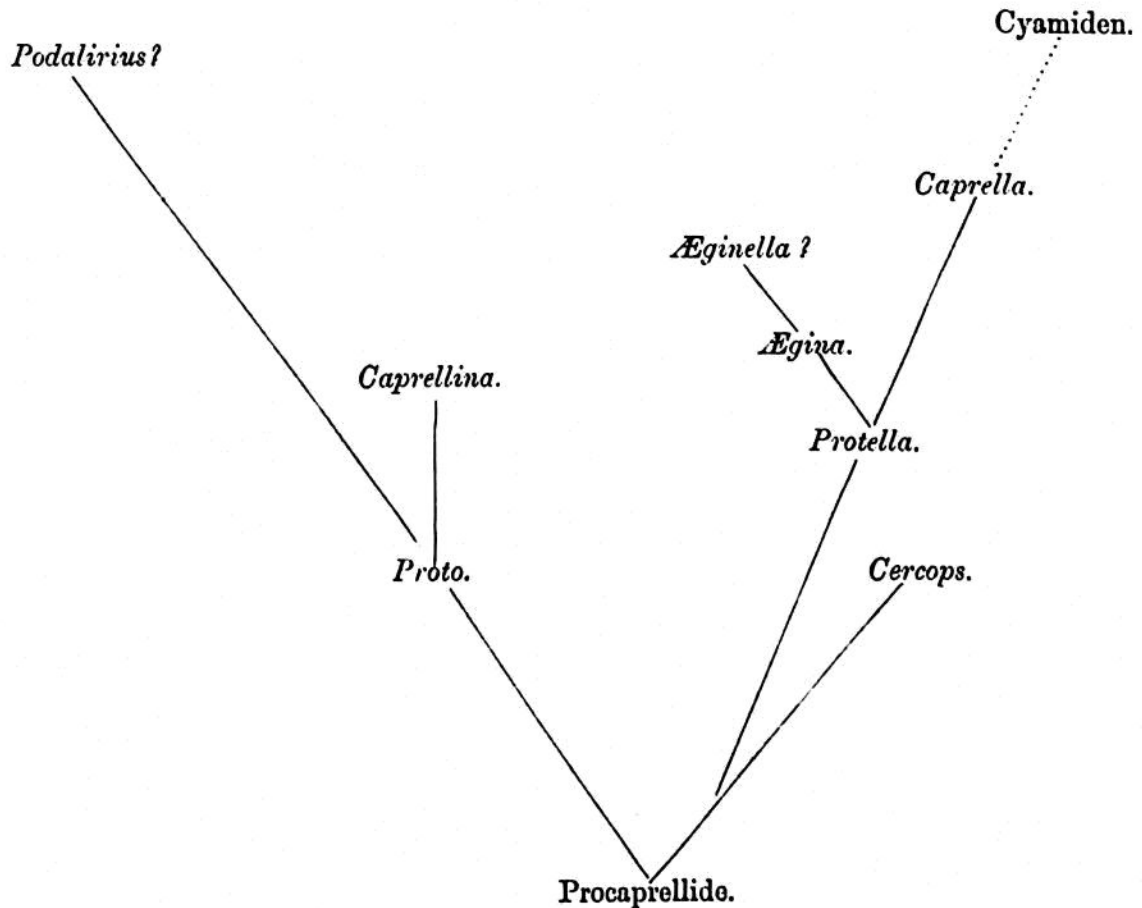
To his new species, *Caprella grandimana*, Mayer assigns the earlier "Caprella Dohrnii," Haller, as a synonym, apparently rejecting Haller's name on the ground of some uncertainty connected with his species, and what seems to be an error in the description. It must be observed also that the name *Caprella inermis*, Haswell, requires to be changed, having been already used by Grube for a different species. As it appears to be undistinguishable "from *Caprella Danilevskii*," Czerniavski, it may as well be known by that name. With *Caprella tuberculata*, Bate and Westwood, Mayer suggests the possible identification of de Quéronic's *Puce de Mer arpentuse*, Fig. A., B. (1780), which in my opinion is quite out of the question.

The genus *Podalirius*, Kröyer, receives three species, distinguished in the following table :—

"Palmarrand der Grossen Greifhand beim Männchen mit einem kleineren proximalen und einem grösseren medialen Fortsatz, .	<i>P. typicus</i> , Kröyer.
"Palmarrand der Grossen Greifhand ohne den medialen Fortsatz : Hinterbeine enorm verlängert, Palmarrand ohne Einschlaghaken, . . . . .	<i>P. Kröyeri</i> , Haller.
Hinterbeine kurz, Palmarrand mit Einschlaghaken, . . . . .	<i>P. minutus</i> , n. s."

Traces of the first and second peræopods are stated to be present in "*Podalirius Kröyeri*." To *Podalirius minutus* is assigned as a synonym *Podalirius typicus*, Hoek.

Under the head of Phylogenie, at page 192, the following hypothetical table of genealogy is given :—



One hundred and thirty-one works are mentioned in the Literaturliste and Nachtrag, pages 194–201, which, with a few unavoidable exceptions, have been carefully studied and are here minutely criticised by Mayer.

Taf. i., a double plate, gives figures, lateral and dorsal, of both sexes of the following species, *Proto ventricosa*, *Protella phasma*, *Podalirius kröyeri*, *Podalirius minutus*, *Caprella*