

Genus 14. *Papyrula*, O. Schmidt.

*Papyrula*, O. Schmidt, Spong. Küste v. Algiers, p. 18, 1868.

The microscleres are a euaster and a microrabd. The ectosome is thin and densely crowded with microxeas.

Type—*Papyrula candidata*, O. Schmidt (p. 199).

Genus 15. *Psammastra*, Sollas.

*Psammastra*, Sollas, Sci. Proc. Roy. Dubl. Soc., vol. v. p. 194, 1886.

Cortex thick, fibrous, containing embedded foreign bodies; surface conulose. The megascleres include modified plagiotriænes. In addition to euasters a microrabd is present.

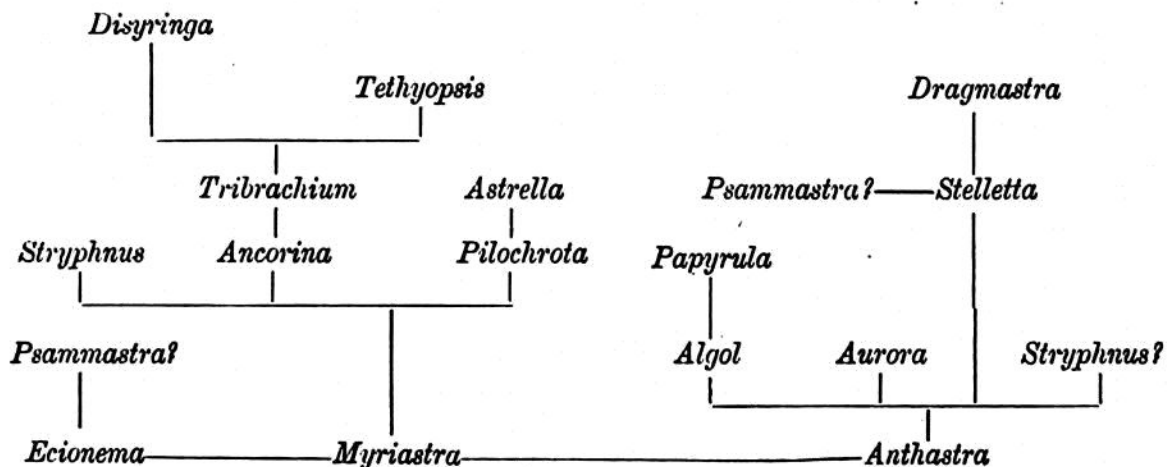
Type—*Psammastra murrayi*, Sollas (p. 175).

Genus 16. *Algol*, n. gen.

The ectosome is thin, not fibrous, and contains tangentially scattered oxeas. The microscleres are a chiaster and a comparatively large microrabd. The megascleres are partly radially and partly irregularly arranged.

Type—*Algol corticata* (Carter) (p. 200).

PHYLOGENY OF THE STELETTIDÆ.



APPENDIX TO THE EUASTROSA.

Family EPIPOLASIDÆ.

Euastrosa (?) without triænes, possessing oxeas and one or more forms of aster. The oxeas arranged partly in radiating fibres, partly scattered loosely in the choanosome; in the ectosome disposed tangentially. The chamber-system (so far as investigated) aphodal.