

specimens there are several small teeth on the inner margin; the propodos is also fringed on both margins with several minute denticles, and the external or dactyloid angle is armed with a strong cusp or tooth. The posterior pair of pereiopoda is chelate, the dactylos and pollex being subequal in both sexes.

Length (male and female), 57 mm. (2.25 in.).

*Habitat*.—Station 170, July 14, 1874; lat.  $29^{\circ} 55' S.$ , long.  $178^{\circ} 14' W.$ ; off the Kermadec Islands; depth, 520 fathoms; bottom, volcanic mud; bottom temperature,  $43^{\circ}$ .

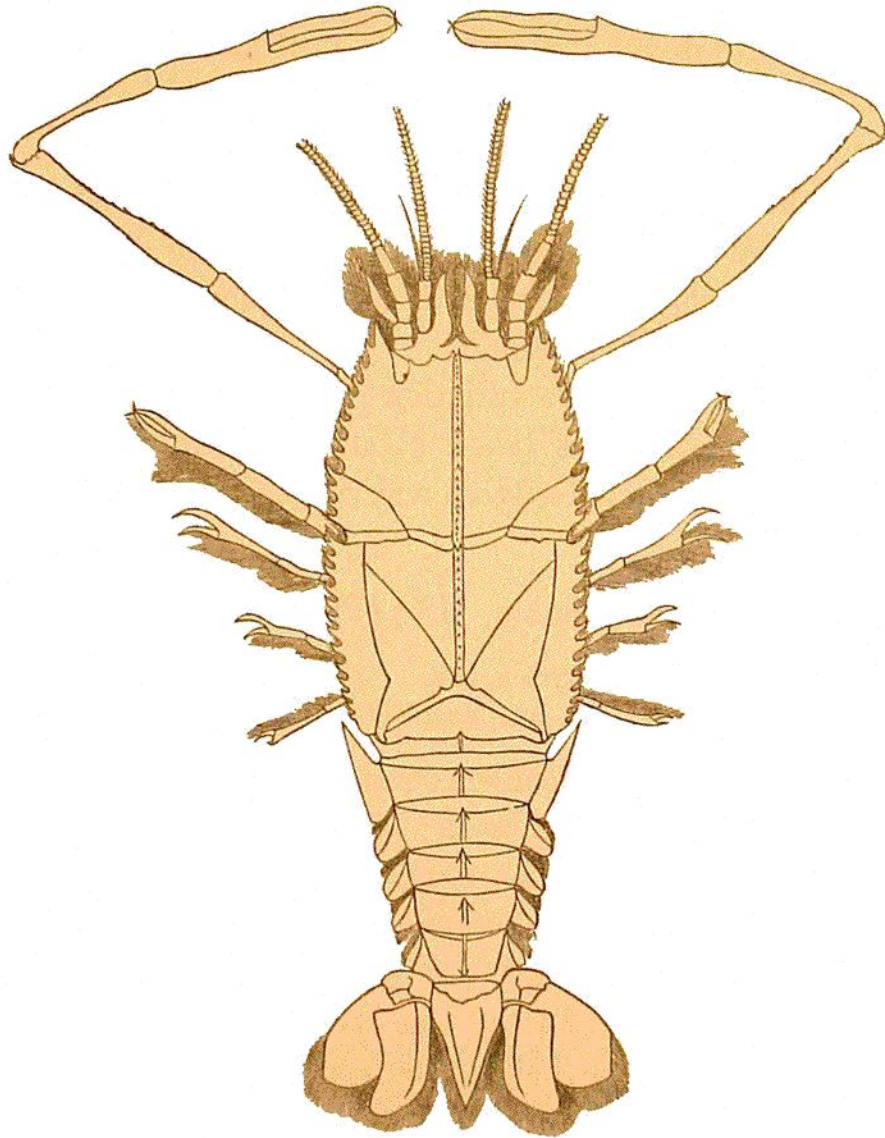


FIG. 33.—*Pentacheles euthriz*. From a drawing by Dr. v. Willemoes-Suhm.

Station 170A, July 14, 1874; lat.  $29^{\circ} 45' S.$ , long.  $178^{\circ} 11' W.$ ; near the Kermadec Islands; depth, 630 fathoms; bottom, volcanic mud; bottom temperature,  $39^{\circ} \cdot 5$ . Two female specimens.

Station 173, July 24, 1874; lat.  $19^{\circ} 9' 35'' S.$ , long.  $179^{\circ} 41' 50'' E.$ ; off Matuku; depth, 315 fathoms; bottom, coral mud. Male.

The surface of the carapace is granulated; out of each granulation springs a small