

it aids the long and lanceolate telson in forming a well-developed rhipidura. The basal joint is short; while the rami are long, broad, foliaceous, and lanceolate, the margins being fringed with a row of closely-planted, evenly-set hairs.

*Observations.*—The specimen is the only one of this species taken. According to Dr v. Willemoes-Suhm, when obtained it “was red, which is I believe the prevailing colour of all deep-sea Crustacea.” This colour, however, rapidly disappeared when the specimen had been for a certain time in spirit.

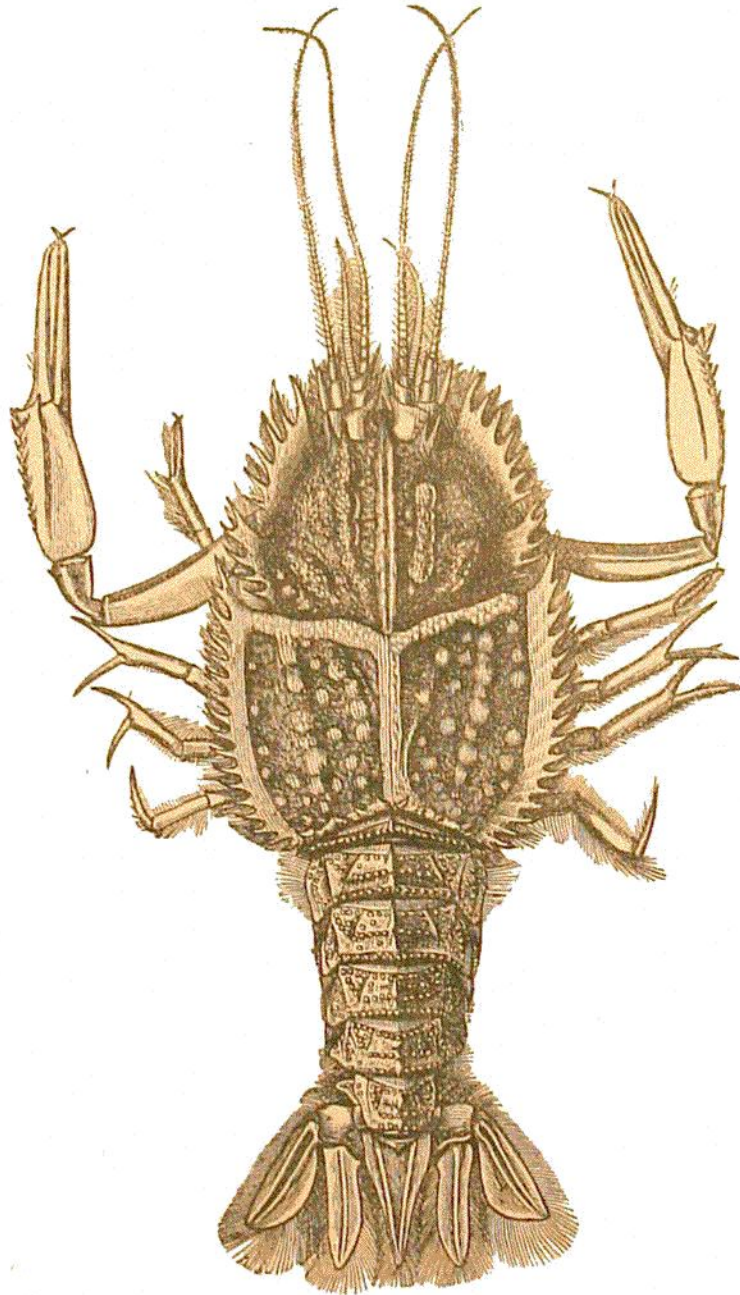


FIG. 31.—*Polycheles crucifera*. From a drawing by Dr. v. Willemoes-Suhm.

*Polycheles baccata*, Spence Bate (Pl. XIV. fig. 1).

*Polycheles baccatus*, Sp. B., Ann. and Mag. Nat. Hist., ser. 5, vol. ii. p. 278, 1878.

Carapace scarcely broader than the pleon at its anterior extremity, lateral margins subparallel, anterior division armed with twelve teeth, the median, which is but imper-