

to the pillar. Only a few of the inner fibres cross in the middle line inferiorly. The circular muscular coat is of considerable thickness, but the hypoderm is remarkably thin. The nerve-area is confined by these surroundings to a comparatively small oval tube presenting superiorly the two fibrous or firm pale central regions, and inferiorly the neural canal and its granular coat. In the ganglionic parts the investment seems to be less complete, and a large opaque area exists superiorly.

Dr. Baird does not give the dentition of his form, which was collected during the Australian expedition (before 1857 ?) by Dr. J. R. Elsey, but so far as the other features are described the specimens procured by the Challenger seem to be identical.

Eunice murrayi,¹ n. sp. (Pl. XXXIX. figs. 7, 8 ; (Pl. XXA. figs. 19, 20).

Habitat.—Dredged in Simon's Bay, Cape of Good Hope, December 1873 ; depth, 18 fathoms.

A single example, measuring 38 mm. in length and having a breadth at the thick anterior part of about 4.5 mm. was procured.

The head (Pl. XXXIX. fig. 7) is furnished with somewhat thick and very distinctly segmented tentacles, which, indeed, are almost moniliform. The median seems to be somewhat longer than the adjoining, but it is incomplete. The segments have considerable breadth, hence the term moniliform is appropriate. The palpi anteriorly are separated by a deep notch. The tentacular cirri just reach the anterior border of the buccal segment, and like the other cephalic processes possess long segments, only four being present.

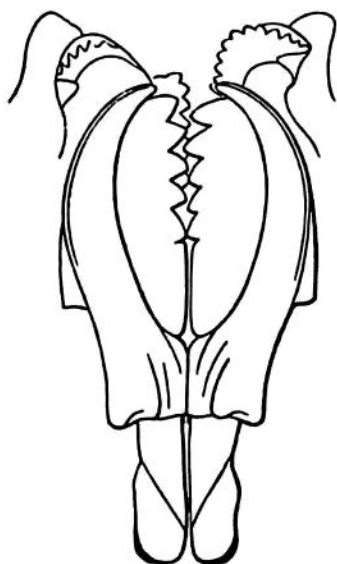


Fig. 48.

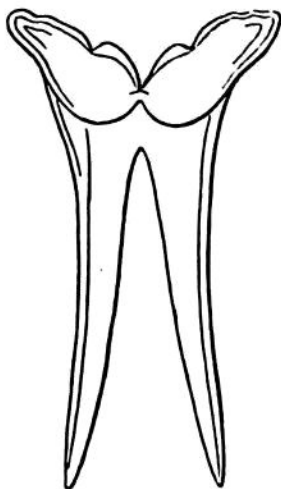


Fig 49.

FIG. 48.—Maxillæ and dental plates of *Eunice murrayi*, n. sp. ; The maxillæ (Fig. 48) are moderately curved.

FIG. 49.—Mandibles of the same species, from the dorsal aspect ; The long spathulate processes posteriorly have

a characteristic shape and are less rounded than usual. The left great dental plate has five teeth, the right six. The left lateral paired plate shows five teeth, the three inner being larger ; and only a single accessory plate with a short dental cone is appended on each side. There are six well-marked teeth

¹ Named after the able Director of the Challenger Commission.