

spines behind. A prominent rostral pouch, supporting a small avicularium on the front of the zoecium below the orifice. Oœcia very prominent, globose, rather wider than high; surface granular with a faintly marked, beaded border.

Habitat.—Marion Island, 50 to 75 fathoms (on *Fucus*). Station 167, lat. 39° 32' S., long. 171° 48' E., 150 fathoms, blue mud.

The oral spines remain, apparently, only on the youngest zoœcia at the growing edge of the colony.

(9) *Schizoporella cecilia*, Audouin (sp.).

Flustra cecilia, Aud., Expl. i. p. 239; Savigny, Egypte, pl. viii. fig. 3.

Lepralia cecilia, Bk., Quart. Journ. Micr. Soc., vol. v. p. 173, pl. xv. figs. 6, 7; Macgillivray.

Schizoporella cecilia, Hincks, Brit. Mar. Polyz., p. 269.

Habitat.—Station 161, off Port Philip, 33 fathoms, sand.

(10) *Schizoporella circinata*, Macgillivray (sp.).

Lepralia circinata, Macgilliv., Nat. Hist. Vict. Dec. iv., p. 21, pl. xxxv. fig. 1.

Character.—Zoarium adnate (on coral). Zoœcia broad, ovate, convex in front, no interzoœcial septa. Surface in the middle prominent, quite smooth, outside of which it is widely punctate or pitted. Oral orifice semicircular, with a perfectly straight lower border with a median narrow notch or fissure which widens out below and lodges a moveable process connected with the operculum; 6 to 8 long articulated oral spines above. Oœcium lofty, prominent, glassy, smooth. Sometimes a long channel-like retentive avicularium on the front, the mandible pointing downwards.

Habitat.—Station 135A, off Inaccessible Island, Tristan da Cunha, 75 to 90 fathoms, hard ground, shells, gravel.

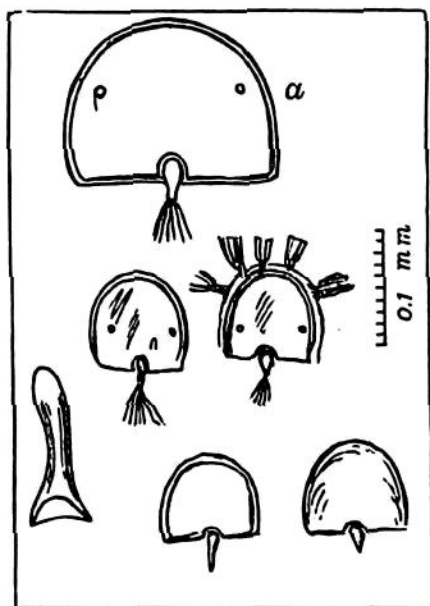


FIG. 46.—*Schizoporella circinata*.
a, Operculum of *Schizoporella cecilia*.

The very peculiar conformation of the operculum in this species, exactly resembling that of *Schizoporella cecilia* in miniature, affords at once a distinctive character, as I am unacquainted with any other form with a similar kind of operculum. What is the nature of the curious little moveable appendage jointed to the operculum, in this and

the preceding species, is by no means clear; but it would seem that a minute fasciculus of muscular fibres is connected with its lower part. The accompanying woodcut shows the characters above described, as well as the great difference in size of the operculum (a) of *Schizoporella cecilia*.