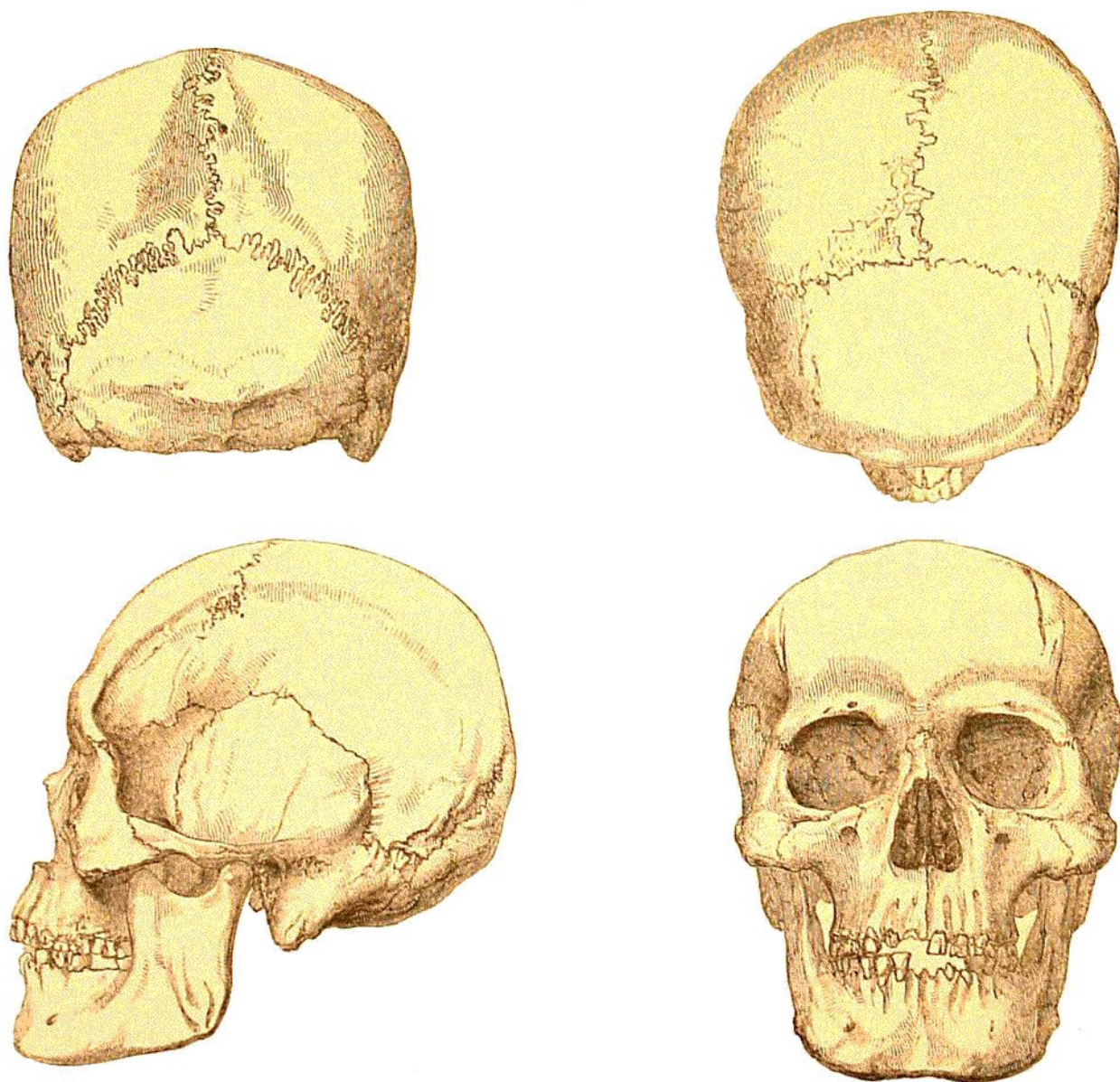


cephalic, from 81·1 to 87·9. Prof. Virchow has also described¹ four skulls sent by Dr. Burmeister from the north side of the Rio Negro, two of which were deformed and two normal. Of the latter, one had a cephalic index of 77·4, the other of 70·3; the mean of the two being 73·85, which is almost the same as the much larger series collected by M. Moreno. Hence, it is clear that before the European colonisation of



FIGS. 5, 6, 7, 8.—Occipital, vertical, lateral, and facial aspects of Patagonian Skull from near the river Chupa.

South America a people with dolichocephalic heads inhabited that part of the continent which we now call Patagonia.

The single skull marked Patagonian brought home by the Challenger does not afford me sufficient material upon which to base any conclusion as to the cranial characters of the modern Patagonians. It is indeed open to some doubt if this be a genuine Patagonian, as in its general form and in some of its measurements it so closely resembled the Fuegian

¹ Communication made to Berliner Gesellschaft für Anthropologie (*Zeitschrift für Ethnologie*, Bd. vi. p. 51, 1874).