

oblong central nervous system, which gives off anteriorly a commissure surrounding the pharynx.

The sexual organs are hermaphrodite. The female organs consist of a number of ovarian cæca, dorsal in position; they open into the cloaca by a central uterine tube. The testes are usually ventral in position, and ramify on either side of the stomach; the cæca

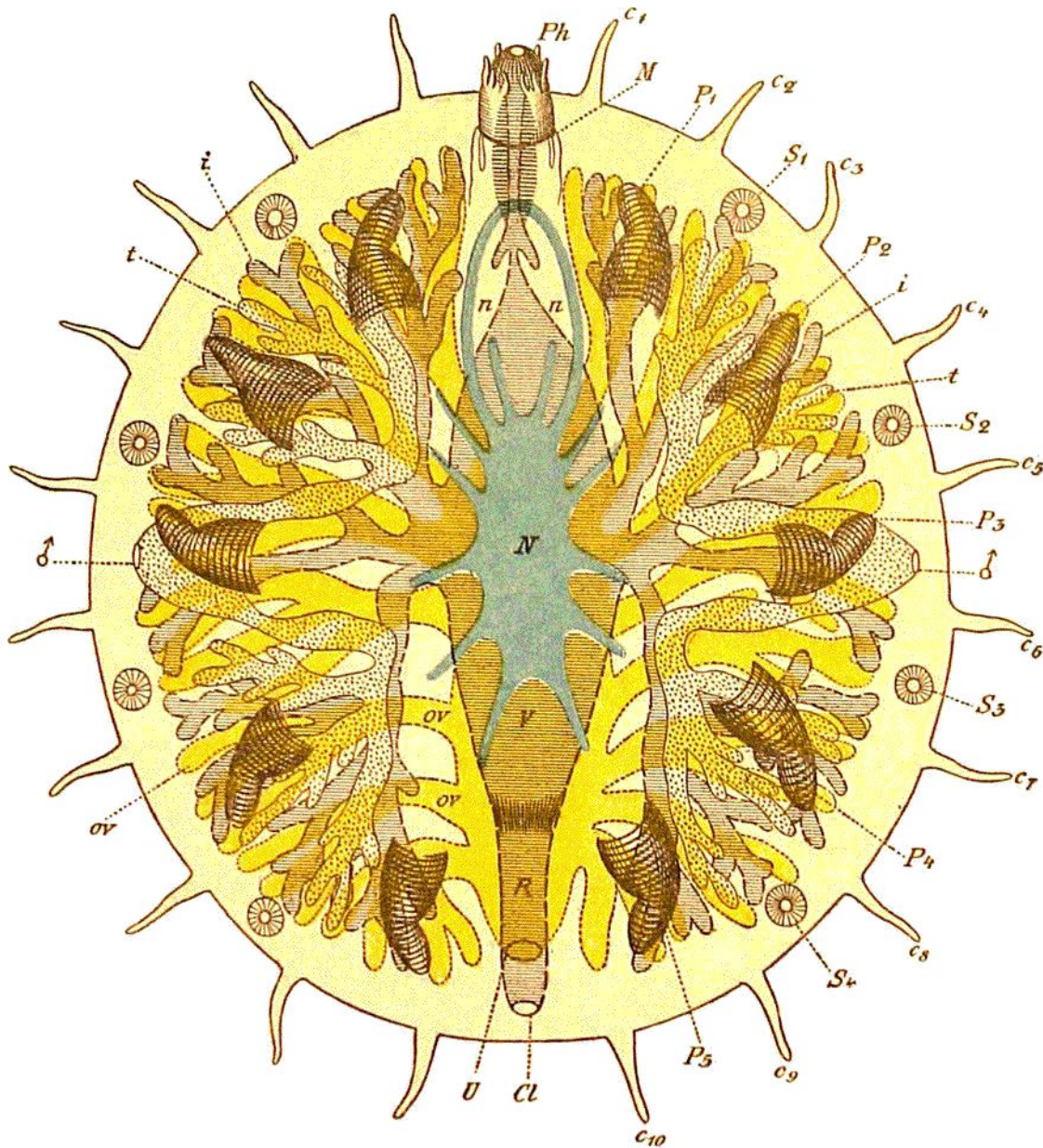


FIG. 1.—Diagram of the Structure of *Myzostoma*.

C_1 - C_{10} the 10 pairs of cirri; Cl , cloacal opening; i , intestine; M , mouth; N , central nervous system (blue), with n, n , oesophageal ring; ov , ovarian tubes (yellow); P_1 - P_5 , the five pairs of parapodia; Ph , protruded pharynx; R , the rectum; S_1 - S_4 , the four pairs of suckers; t , testicular follicles; U , opening of the uterus into the rectum; V , stomach; ♂ the two lateral male genital openings.

unite on either side into a spermatic vesicle, which opens to the exterior between the third parapodium and the margin of the body.

The above description, with a few unimportant modifications, applies to all the species known up to the present time. I shall now show how far our knowledge of the anatomy of the group has been advanced by the new forms to be described in the present Memoir.