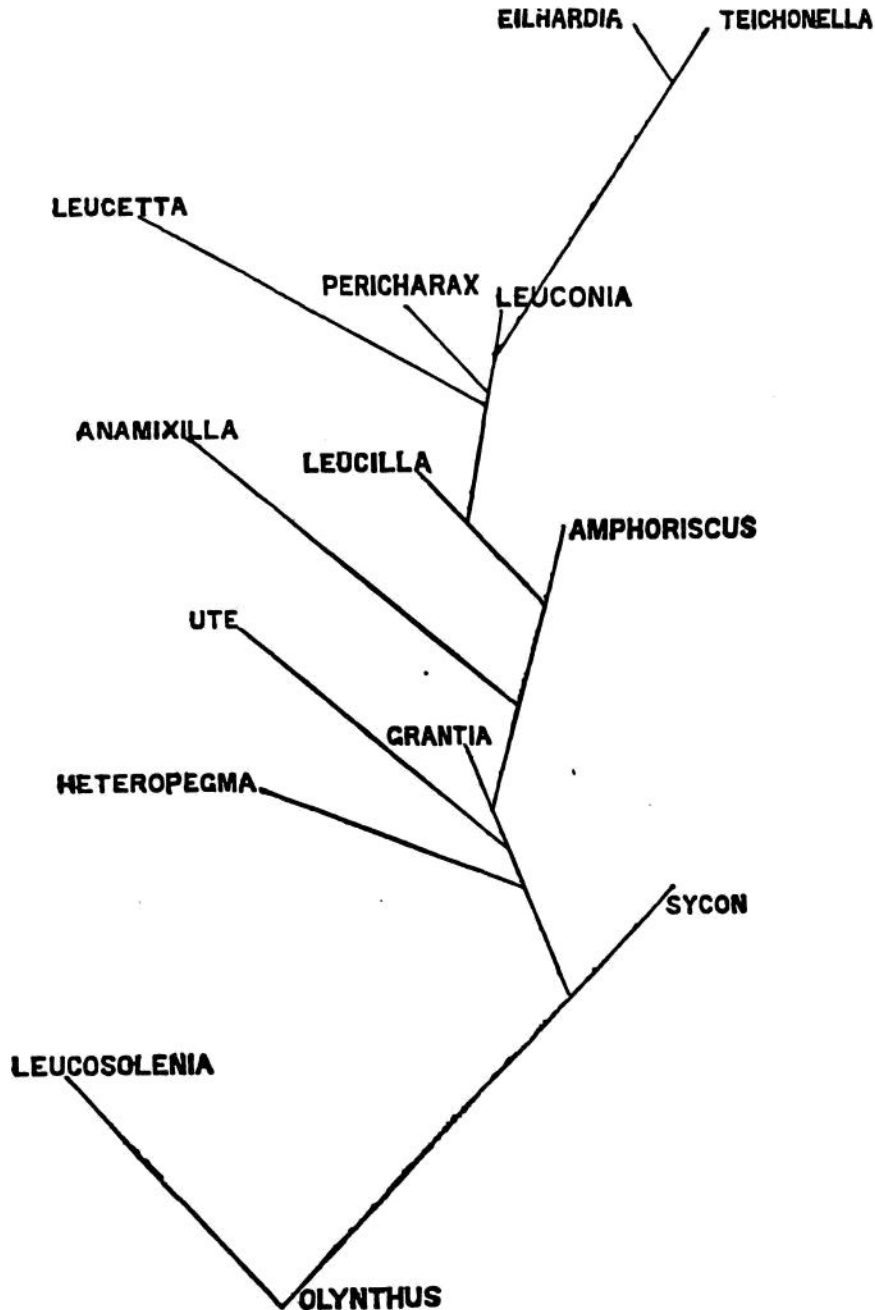


*Eilhardia*, n. gen.

Teichonidæ of calyciform shape; that surface which carries pores supported by triradiate and minute acerate spicules, that which bears oscula supported by large acerate spicules.



I have now finished my account of the genera; their conjectural mutual phylogenetic affinities may be expressed graphically by the above diagram.

The first half of my task is therewith accomplished, and the best conclusion I can give to it will consist in signalling the merits of the investigator whose name has been