

*Aeipetes antarcticus* (figs. 20, 21), commonly placed in the genus *Thalassæca* with

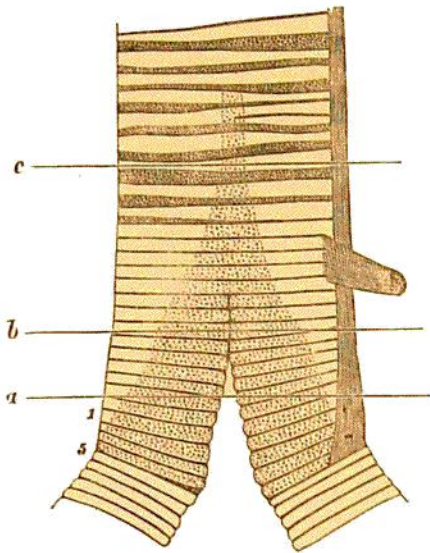


FIG. 17.—Syrinx of *Ossifraga gigantea*, from before.



FIG. 18.—The same, from behind.

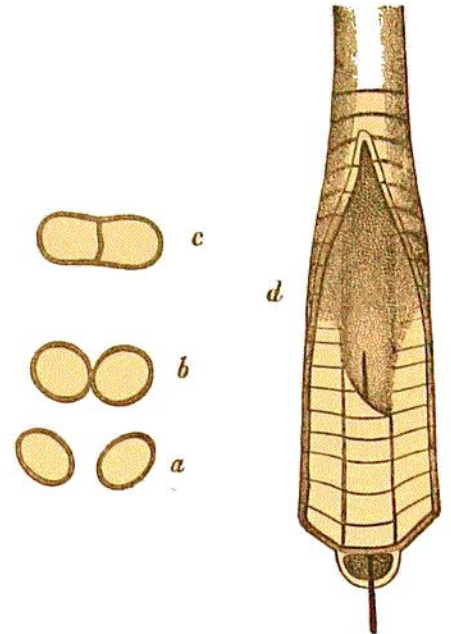


FIG. 19.—*a, b, c*, sections of syrinx and trachea of *Ossifraga* along the lines *a, b, c*, of fig. 17, to show the double nature of the tracheal tube below, and its complete division by a median septum above. *d*, trachea opened from the side, to show the median septum, dividing it into two parallel tubes, through the left of which a pointer is passed, below, and terminating above by a free margin.

*Thalassæca glacialoides*, completely differs in the structure of its syrinx from the last three species described, and is more like *Prion*. The two first pairs of bronchial rings



FIG. 20.—Syrinx of *Aeipetes antarcticus*, from before.

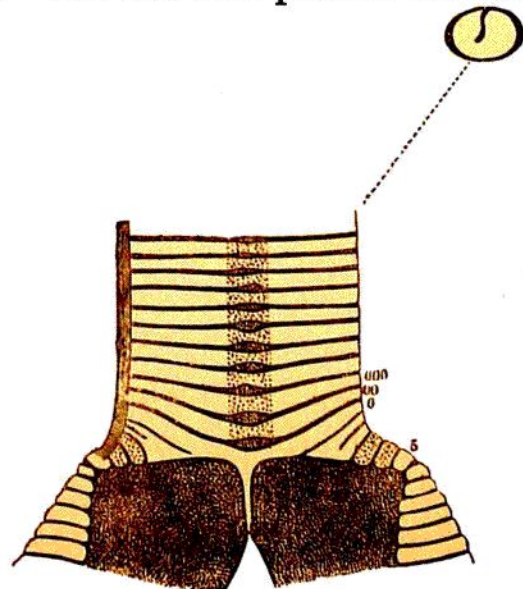


FIG. 21.—The same, from behind. The smaller figure represents a section of the trachea, to show the imperfect septum dividing it.

are complete anteriorly, the second being ossified, for a small extent only, in the middle