

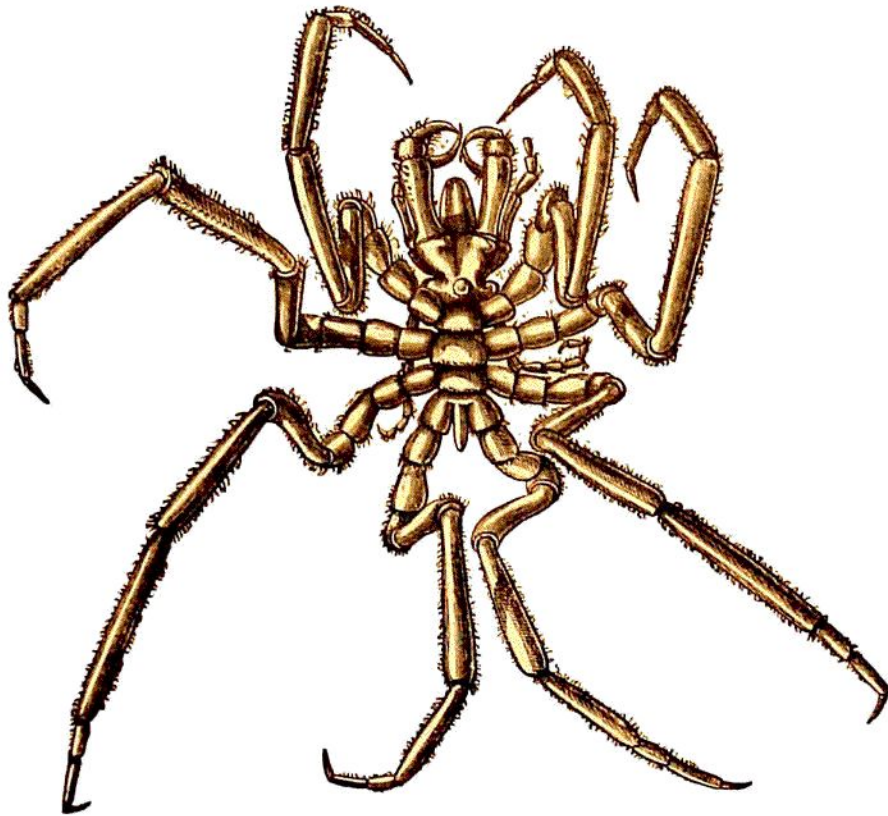
A species of *Scalpellum*, which, so far as I know, has not been observed hitherto, is a common commensal on the legs of *Nymphon robustum*, Bell.

This species was dredged at

Station 8 (cruise of the "Knight Errant"). Lat. 60° 3' N., long. 5° 51' W. August 17, 1880. Depth of the sea, 540 fathoms. Cold area. Perhaps 1000 specimens.

Station 2 (cruise of the "Knight Errant"). Lat. 60° 29' N., long., 8° 19' W. July 28, 1880. Depth of the sea, 375 fathoms. Warm area. One specimen only.

This single specimen from the warm area must, most probably, be considered as one which has strayed from the cold area. As far as I know, the species has not been observed at a lower latitude than 60° N.



*Nymphon robustum*, Bell.

*Colossendeis proboscidea*, Sabine (sp.).

*Phoxichilus proboscideus*, Sabine, Marine Invertebrate Animals in a Supplement to the Appendix of Captain Parry's Voyage for the Discovery of a North-West Passage in the years 1819-1820, London, John Murray, 1824, p. ccxxvi.

*Colossendeis borealis*, Jarzynsky, Præmissus Catalogus Pycnogonidarum inventarum in mari glaciali ad oras Lapponiæ rossicæ et in mari albo, anno 1869 et 1870. Annales de la Soc. des Naturalistes de St Pétersbourg, vol. i., 1870.

*Colossendeis proboscidea*, Sabine (sp.), G. O. Sars, Prodrömus descriptionis, &c., Archiv. für Math. og Naturvid., ii. 268, 1877.

Of this interesting species, the first of the genus *Colossendeis* that was observed, four specimens were trawled at Station 8, together with many specimens of *Nymphon*