

x Another group of whalebone whales, the fin-whale (*Balænoptera physalus*), the humpback whale (*Megaptera boops*,

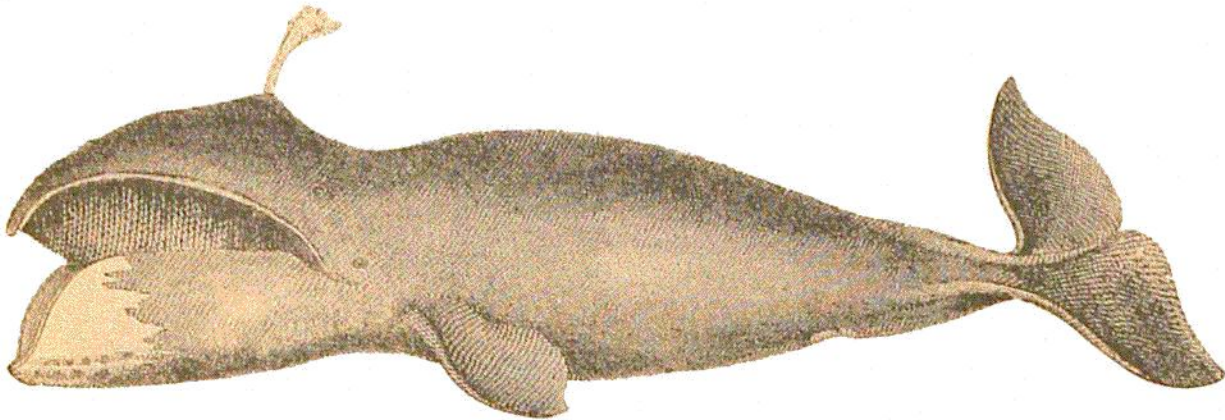


FIG. 568.
Greenland whale (*Balæna mysticetus*). (From Scoresby.)

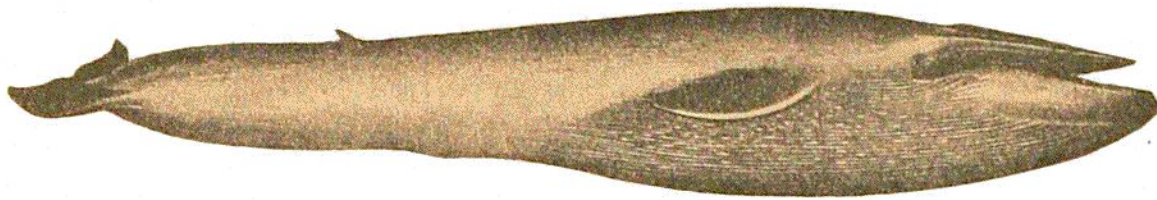


FIG. 569.
The blue fin-whale (*Balænoptera musculus*). (From G. O. Sars.)

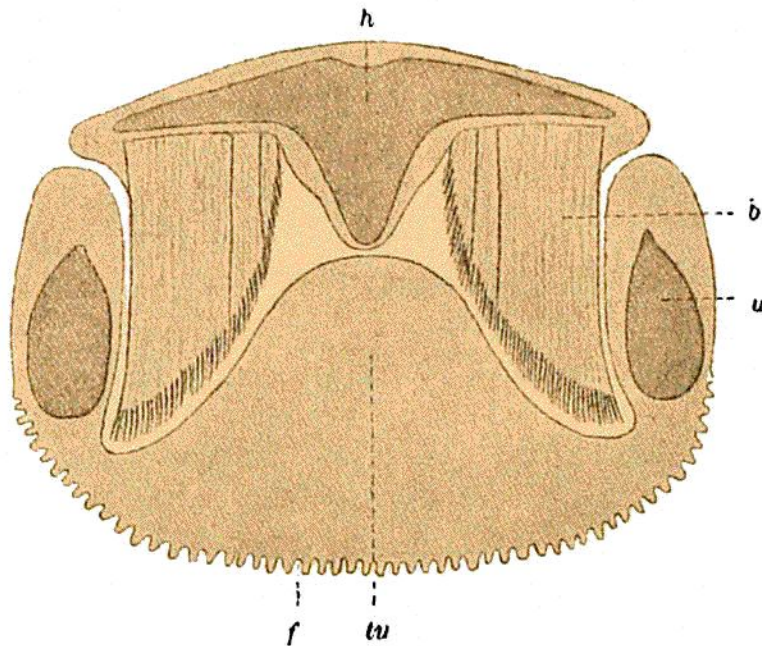


FIG. 570.
Cross-section of head of a fin-whale (*Balænoptera*). (From Boas.)
h, Head; u, lower-jaw; b, whalebone; tu, tongue; f, furrows of the skin.

Fig. 571), and the "saithe" whale (*Balænoptera borealis*) feed on plankton as well as on pelagic fishes, mainly capelan and herrings, which also constitute the main food of the small tooth-whales of the porpoise description.