

tribution according to size and consequently according to age. We then find that the earliest stages of all the leptocephali

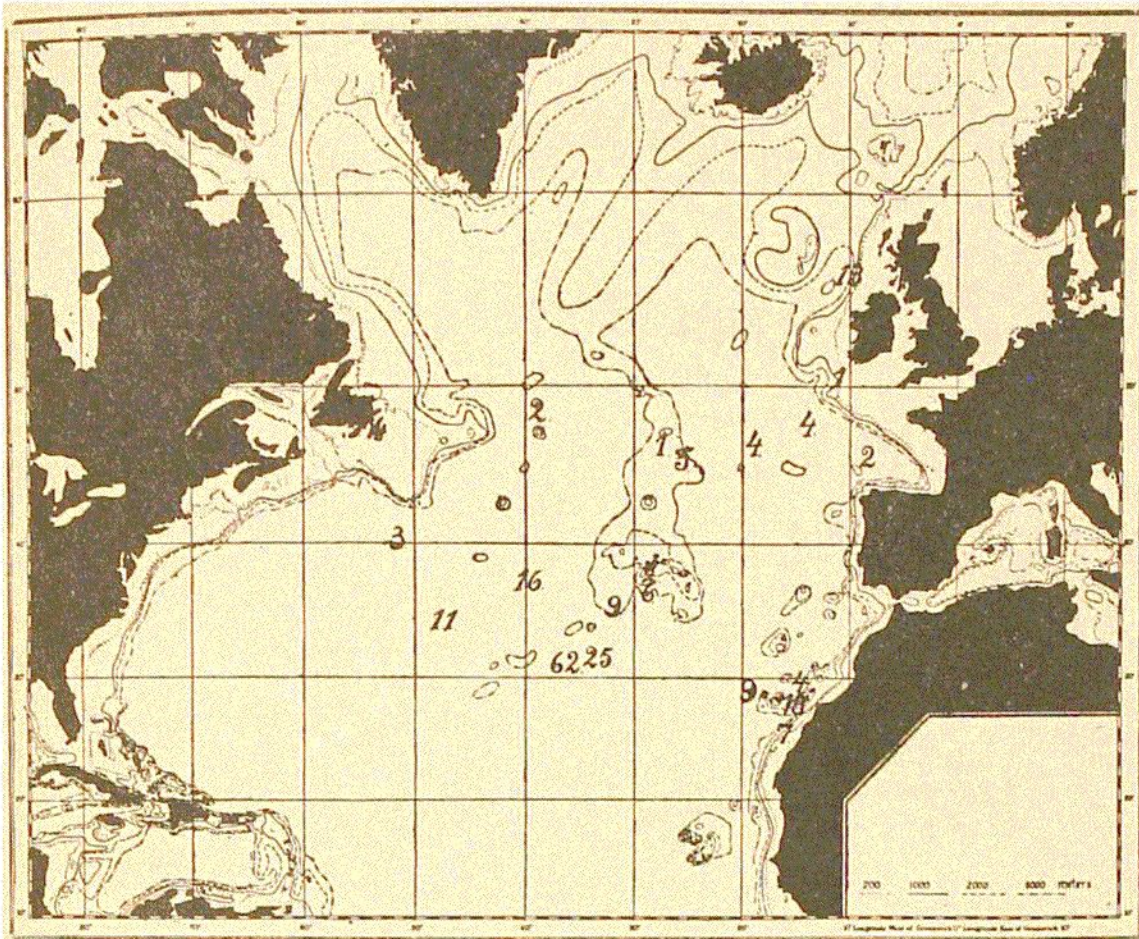


FIG. 547.—NUMBER OF LEPTOCEPHALI OF ALL SPECIES CAUGHT AT EACH STATION.



FIG. 548.
Young Leptocephalid, only 1.7 cm. long. Station 64.

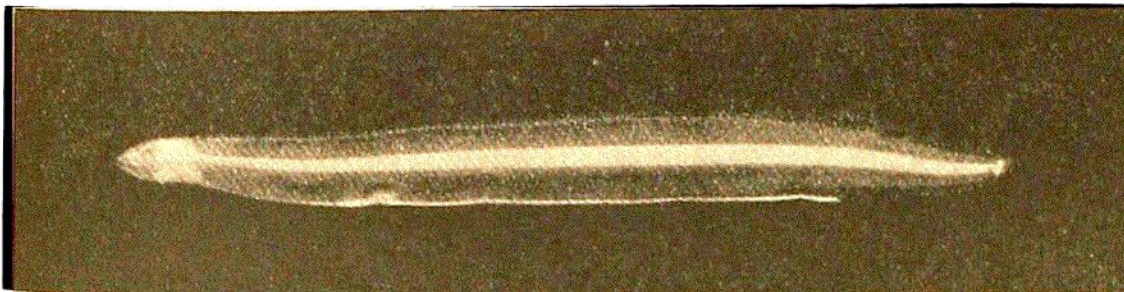


FIG. 549.
Leptocephalus Synophobranchi pinnati. Nat. size, about 5 cm. Station 62.

captured were also taken in our southern section, south of the Azores. As mentioned in Chapter III. we took, in the Sargasso Sea at Station 64, very small leptocephali between 1 and 2 cm.