

long. Similar observations have been recorded from the Azores by the Prince of Monaco.

*The Boreal Area outside the Norwegian Sea.*—The northern North Atlantic has previously been investigated by Danish expeditions on board the "Ingolf," "Thor," and "Tjalfe" in the waters of western Europe, Iceland, and Greenland, by a German expedition on the west coast of Greenland and by British expeditions west of Britain, while Hensen's Plankton Expedition also crossed this area. On the other hand, the

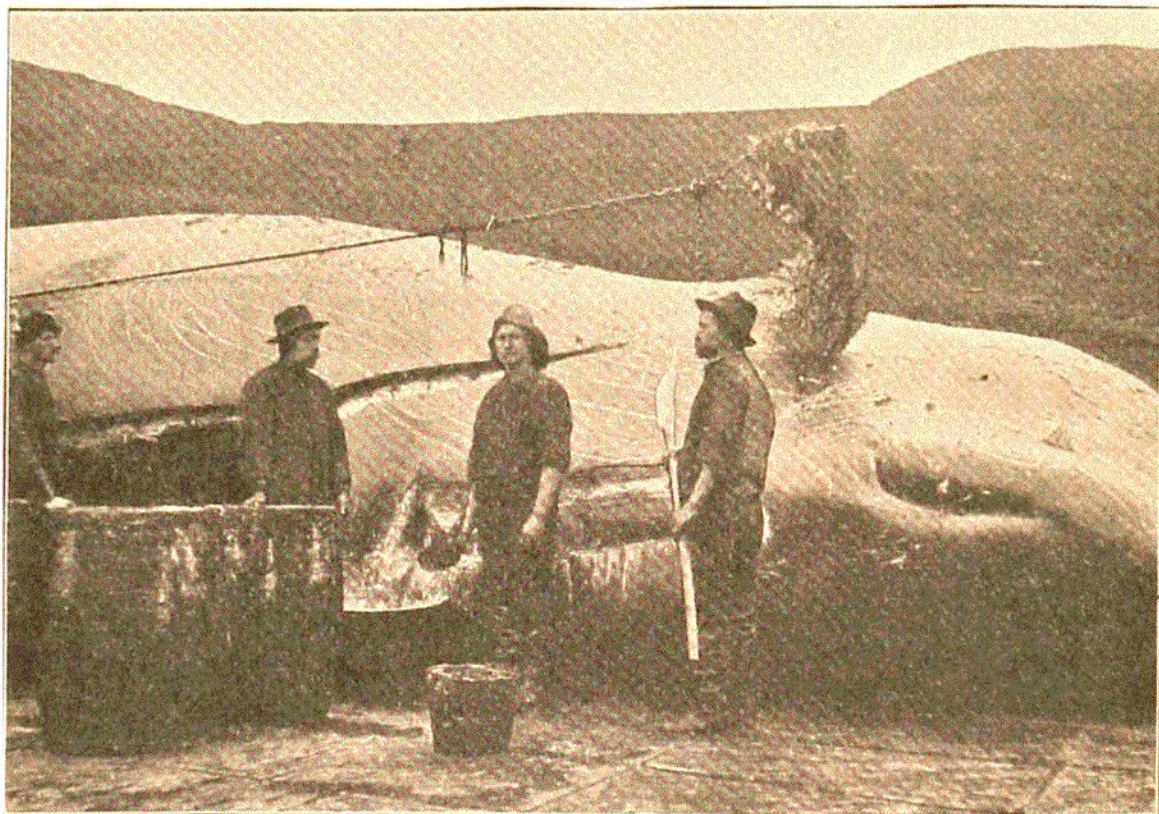


FIG. 485.—CACHALOT WITH LONG STRIPES FROM STRUGGLE WITH *ARCHITEUTHIS*.

exceedingly interesting waters between Davis Strait and the United States have been very little examined.

The results of all these expeditions prove the northern North Atlantic to contain the same pelagic animals as the Norwegian Sea. According to the various bodies of water, however, the animal life varies in composition in different parts of the ocean. Thus to the west of Britain pelagic life is temperate Atlantic, mingled to some extent with boreal forms; to the south of Iceland the boreal forms predominate, though the Atlantic admixture is very important; in Davis Strait the character of the fauna is mainly Arctic, though some boreal forms still appear (the capelan, for instance, seems very characteristic). Proceeding from Labrador to the Northern States the purely