

known from the Pacific.<sup>1</sup> The "Michael Sars" took this genus in deep water at several stations in the North Atlantic.

Cirripedia.

The Cirripedia are the only group of crustaceans which in the adult stage abandon the pelagic life of youth and become sessile, fixing themselves to the bottom like many other invertebrates. Some are fixed to the rocks of the littoral region (the balani), or to pumice stones and nodules from the great depths of the ocean, while others are attached to whales and turtles, or (like the Lepadidæ) to floating objects carried along by currents. One species (*Lepas fascicularis*) forms considerable floating clusters composed of several individuals. A peculiar group (for example, *Sacculina* from the tail of decapod crustacea) is entirely parasitic and transformed to such a degree that the crustaceous nature of the animal is hardly recognisable.

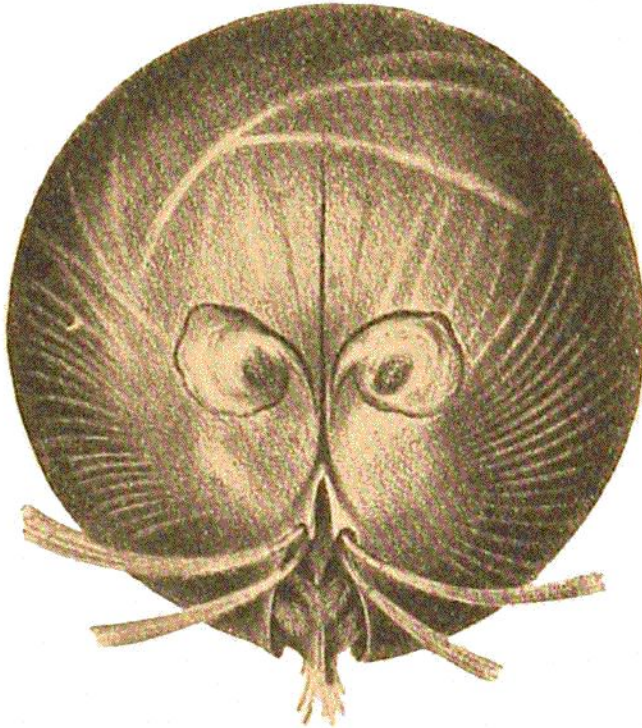


FIG. 419.

*Gigantocypris agassizii*, G. W. Müller (♂).  
(From Müller.)

The Cirripedia from the Atlantic cruise of the "Michael Sars" have been examined by P. P. C. Hoek, who found the following species of the genus *Lepas* :—

*Lepas anatifera* (see Chapter III., p. 100, Fig. 87), taken at Station 61 (on a floating log), and off St. John's.

*Lepas anserifera*, Station 67 (on Sargasso weed), Station 69 (on a small log).

*Lepas pectinata*, Stations 10, 25, 31, 69, 86, 91 and 92 (fixed to birds' feathers, cork, fucus, pumice-stone, and to *L. fascicularis*).

*Lepas hilli*, Station 56 (on a turtle).

*Lepas fascicularis*, Stations 25, 91, 92.

All these species are known from other oceans, especially the Pacific, and are principally warm-water forms. Of other Cirripedia the following species were captured :—

*Pocilasma carinatum*, Station 53 (on the bottom).

*Conchoderma virgatum*, Station 56 (on a turtle).

*Scalpellum velutinum*, Stations 24 and 53 (on the bottom).

„ *dicheloplax*, Station 10 (on the bottom).

„ *atlanticum*, Station 23 (on the bottom).

Schizopoda.

G. O. Sars described 57 species of Schizopoda from the "Challenger" Expedition,<sup>2</sup> of which 32 were taken only at the surface, 6 between 32 and 300 fathoms, 4 between 300 and 1000 fathoms, 11 between 1000 and 2000 fathoms, and 4 beyond 2000 fathoms. Most of these were

<sup>1</sup> See G. W. Müller, *Wiss. Ergeb. "Valdivia" Expedition*, Bd. 8, 1900.

<sup>2</sup> See Zool. Chall. Exp., Part XXXVII., 1885.