

remarkable being the larvæ of starfishes, ophiuridæ, and sea-urchins. In the larvæ of the ophiuridæ (see Fig. 411) the skeleton consists of rigid

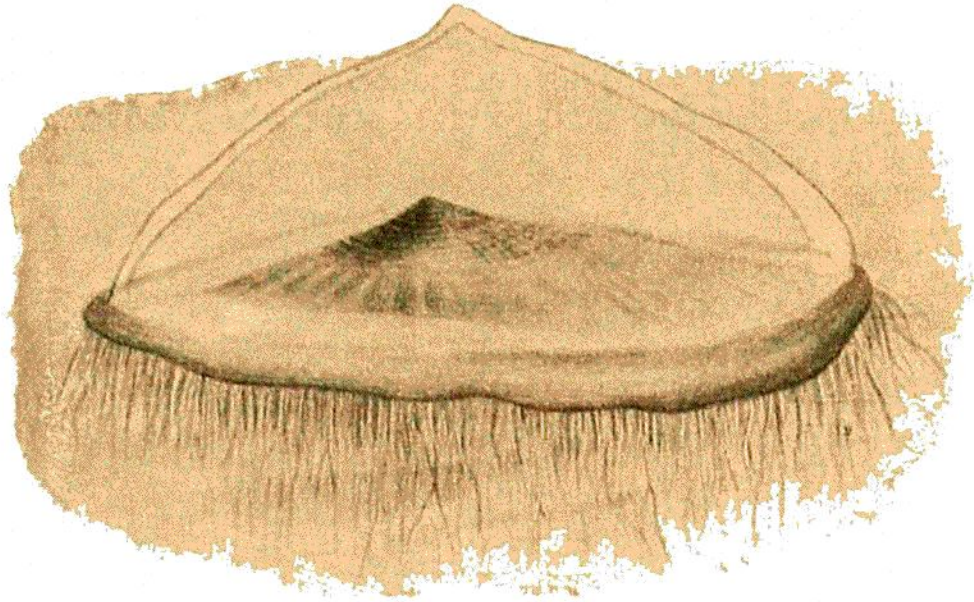


FIG. 410.  
*Veella spirans*, Esch. (From Steuer.)



FIG. 411.  
Larva of *Ophiothrix fragilis*, O. F. Müller (about  $\frac{1}{2}$ ). (From Mortensen.)

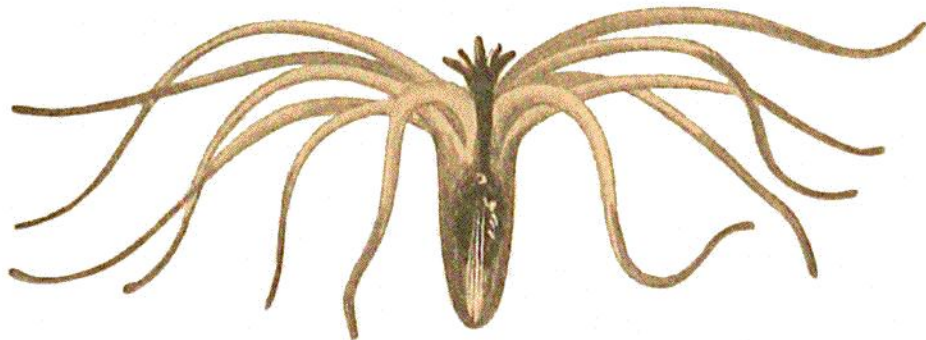


FIG. 412.  
*Arachnactis albida*, M. Sars. Nat. size. (From Sars.)

rays of carbonate of lime, with a belt of cells provided with whip-like hairs, by the aid of which they swim; these larvæ go through wonderful metamorphoses before finally attaining the adult form.