

Sea-slugs: *Stichopus tremulus*, *Bathyploetes tizardi*, and *Cucumaria hispida*. Starfishes: *Psilaster andromeda*, *Astrogonium pareli*, *Pteraster multipes*, *Peltaster nidarosiensis*, *Brisinga coronata* and *B. endecacnemos*.

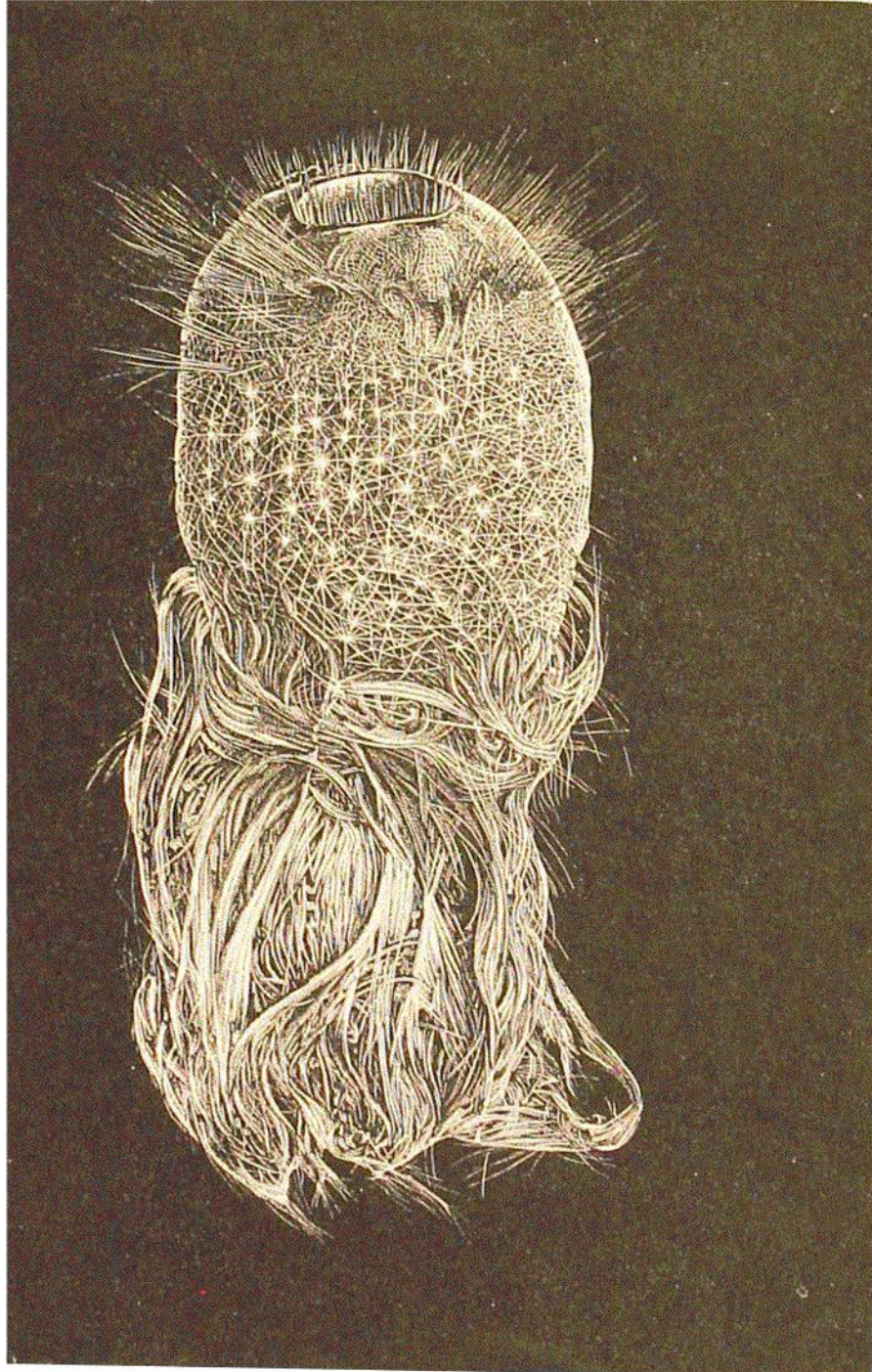


FIG. 383.

*Pheronema carpenteri*, Wy. Thoms. Reduced. (After Wyville Thomson.)

Brittle-stars: *Ophiacantha abyssicola*, *Ophiactis abyssicola*, *Ophiocten sericeum*, *Asteronyx loveni* (on *Funiculina quadrangularis*), *Gorgonocephalus lincki*. Sea-mice: *Spatangus raschi*, *Schizaster fragilis*. Sea-lily: *Rhizocrinus lofotensis*. Crustaceans: *Munida tenuimana*, *Pasipheea*