

position of the fauna of the different "facies" depends to a great extent on the structure of the animal-forms, inasmuch as some forms must have a vegetable or hard solid foundation, while others require loose material. Littoral gasteropods, as a rule, require a solid foundation, and they are therefore generally absent from the sandy bottom; but there are certain burrowing forms which can only live where the bottom is incoherent. Other forms, again, like the crab, are able to live on nearly every kind of bottom.

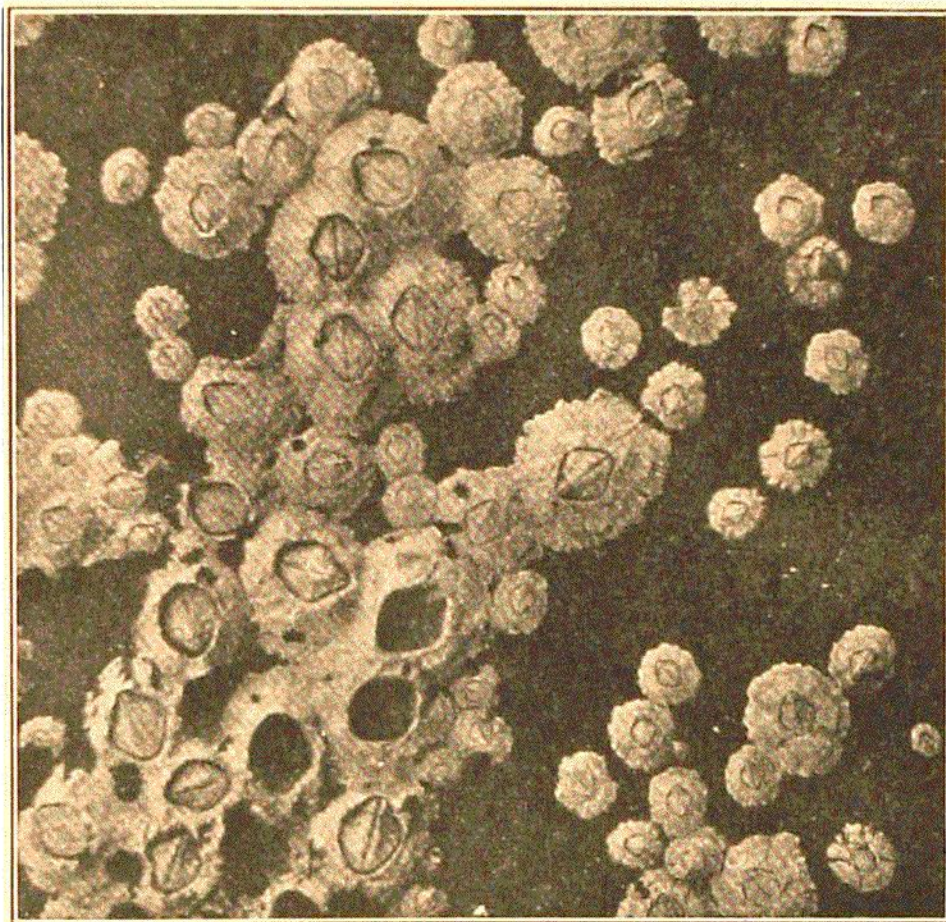


FIG. 315.  
*Balanus balanoides*, L.

Below the low-tide area, with its fucus vegetation, we find on hard bottom a *Laminaria* belt beginning immediately below the fucoïd belt, and always covered by water.<sup>1</sup> We find also a *Zostera* belt, hard bottom, and sandy bottom.

On the bare or scantily overgrown rocks near high-water mark we find a white belt of barnacles (*Balanus balanoides*, see Fig. 315); when examined at high tide we notice these little creatures extending and contracting their lash-like limbs to set

Low-tide  
area.

<sup>1</sup> Only at very low ebb-tides and in certain places do we find certain species of *Laminaria* also laid bare.