

on the edge of the continental slope yielded some interesting captures, especially several spotted eel larvæ (leptocephali).

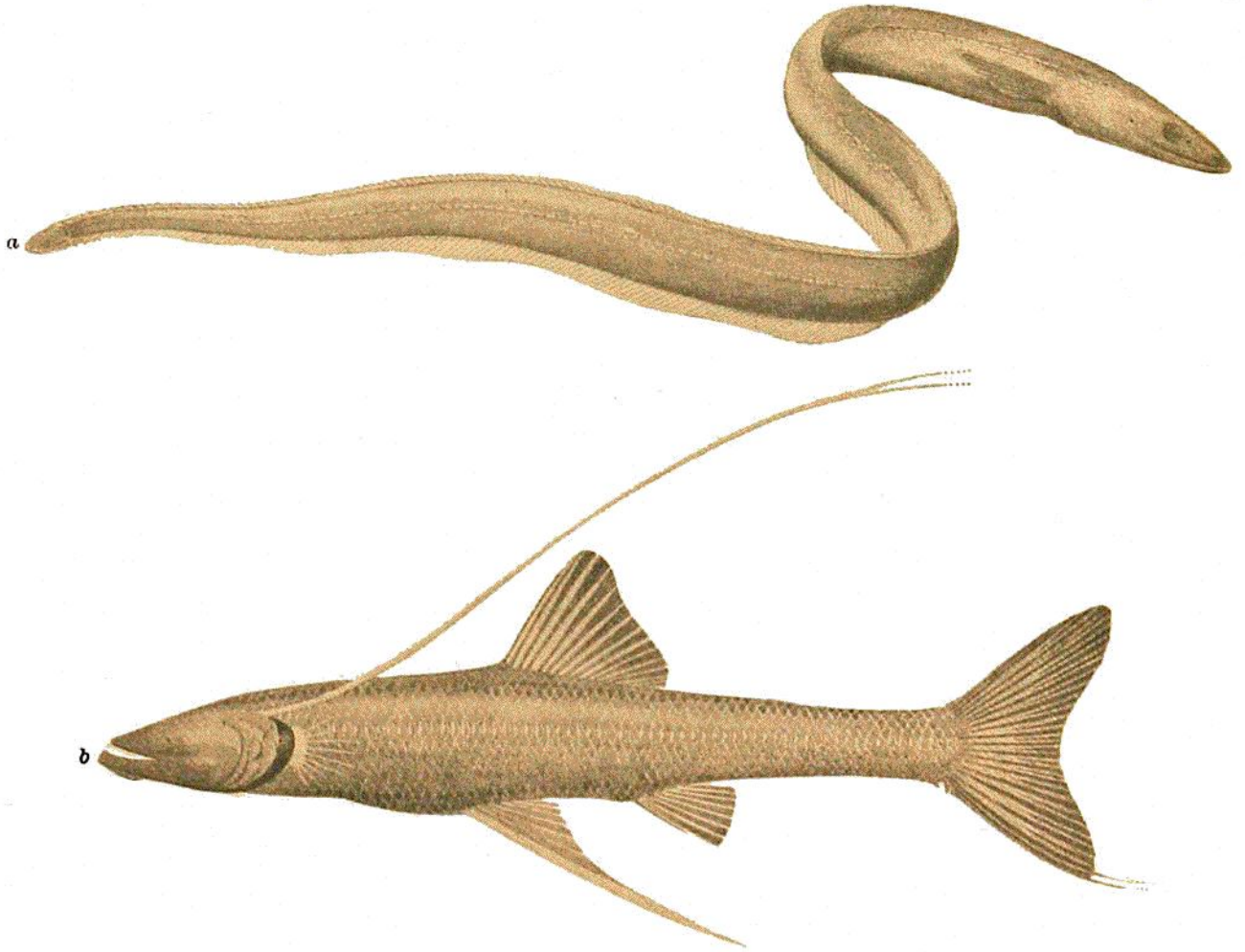


FIG. 57.—TWO DEEP-SEA FISHES FROM STATION 41.  
*a. Synphobranchus pinnatus*, Gron. Nat. size, 31 cm.  
*b. Bathypterois dubius*, Vaill. Nat. size, 17 cm.

Deeper trawlings were impracticable. The captain sounded in several places to try and find a spot where there was a chance of trawling along the slope at a fairly uniform depth, but the

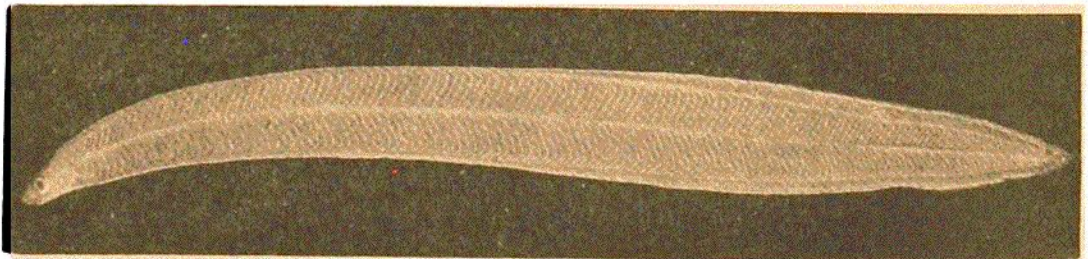


FIG. 58.  
*Leptocephalus Congri vulgaris*.

slope was too steep, and we had to abandon the idea. The only place where, according to the chart, there was any prospect of trawling at so great a depth as 1000 metres was between the