

with a single exception, none were obtained beyond a depth of 30 fathoms. The exception referred to is a species of *Porcellana*, apparently very closely allied to the common European *Porcellana platycheles*, Pennant, from Station 24 (390 fathoms). Numerous specimens of *Polyonyx obesulus*, Miers, were taken in the interior of a Sponge (*Hippospongia anomala*, Poléjæff), at Station 186 (8 fathoms), and the same species appears also to have occurred in a free condition at this Station.

“The Paguridea are well represented in the collection, and a number of new species are present, especially from deep water. As indicating one feature of this group, it

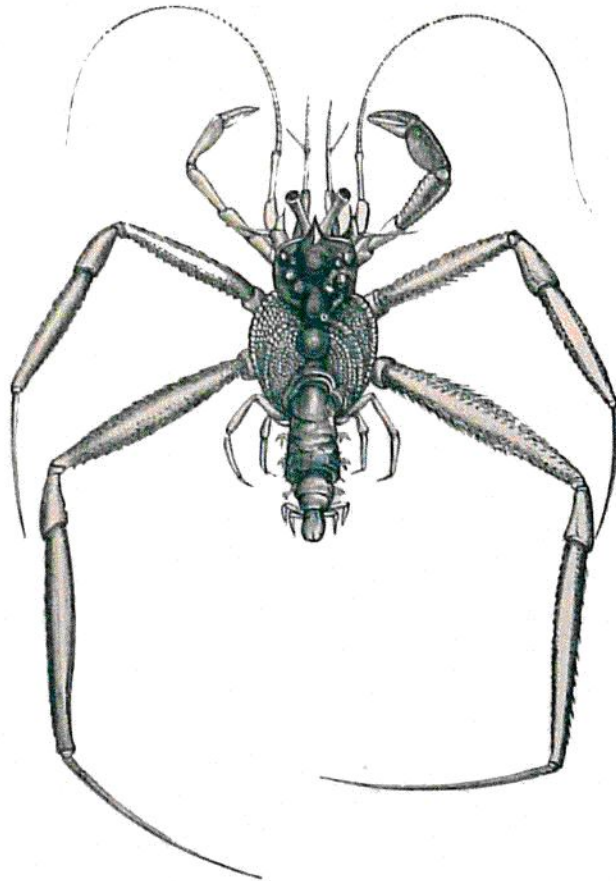


FIG. 329.—*Tylaspis anomala*, n. gen. et sp.; twice natural size. South Pacific Ocean, 2375 fathoms.

may be stated that Pagurids were taken at twelve Stations, where the depth registered was over 1000 fathoms, and two species occurred at depths beyond 2000 fathoms. The majority of these deep-water species are characterised by long and slender limbs, but the eyes—organs in the higher Crustacea perhaps most subject to variation at great depths—appear to have undergone very slight modification. It is also to be noted that, almost without exception, the species taken at great depths inhabit shells to which one or more Actiniæ are attached. Some of the shells bore on them the well known colonial *Epizoanthus parasiticus*, which had as usual removed all their calcareous matter. Some