

301 mm.), and the deep-sea species *Ascorhynchus glaber*, Hoek, *Pallenopsis mollissima*, (Hoek), and *Nymphon hamatum*, Hoek, are also remarkable for their dimensions, especially when they are compared with species of the same genera inhabiting shallow water.

"It has not been possible to demonstrate by the aid of the deep-sea material any relationship of the Pycnogonida either with the Arachnida or with the Crustacea. It is necessary, therefore, to consider them, provisionally at least, as a distinct group (Class)

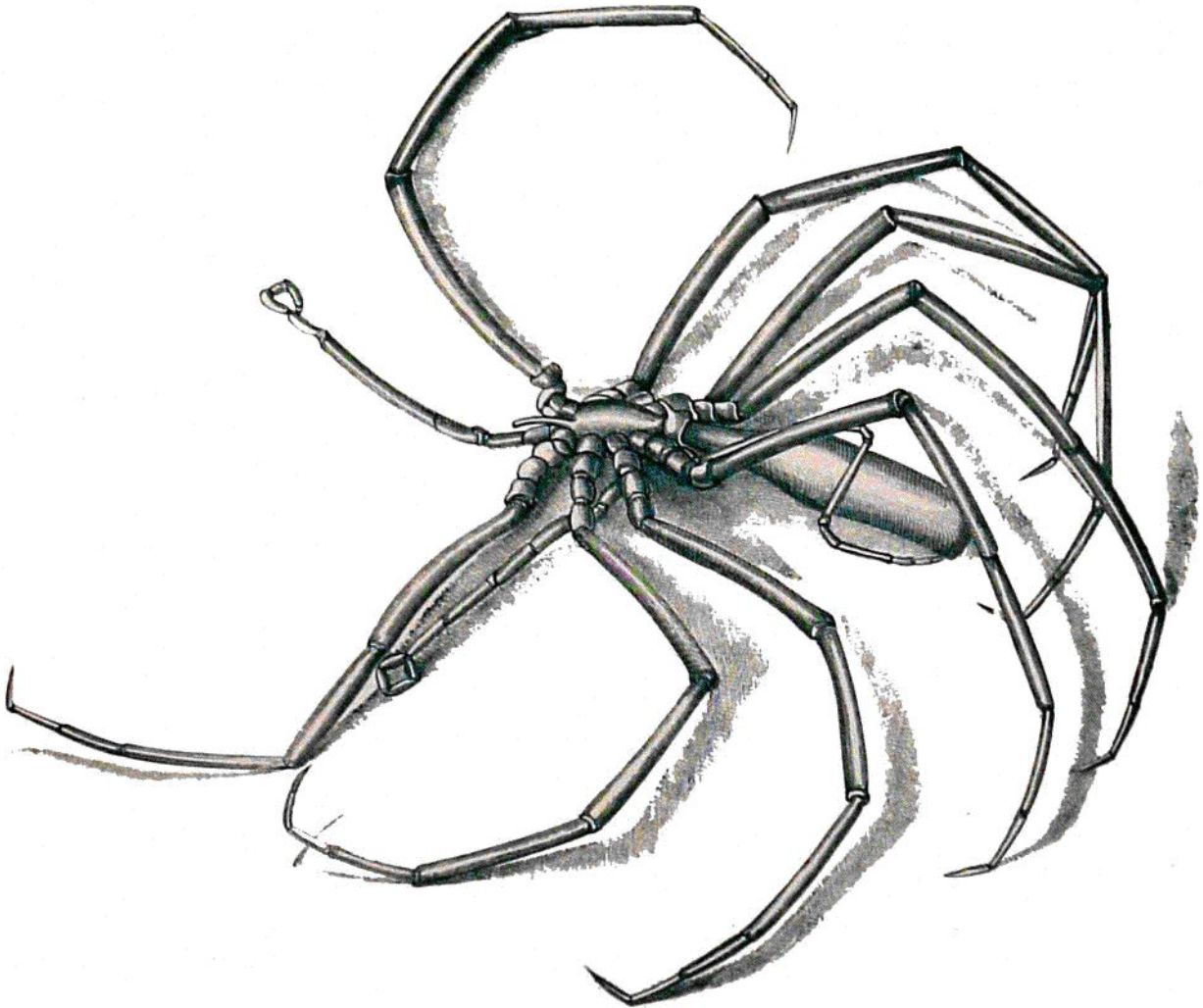


FIG. 323.—*Colossendeis proboscidea*, (Sabine). 540 fathoms. Natural size.

of Arthropodous animals. Their body consists of a cephalon, a thorax, and a rudimentary abdomen. The cephalon is united with the first segment of the thorax, and three free thoracic segments follow behind this coalesced segment. When comparing different genera of Pycnogonida a great diversity is shown with regard to the number of cephalic appendages; sometimes there are three pairs of them, sometimes only two, sometimes one, and occasionally they are all wanting. This last circumstance, however,