

very closely related forms, perhaps even referable to the same genus, one of which occurs on soft ground, and possesses a completely developed root-tuft, while the other, which

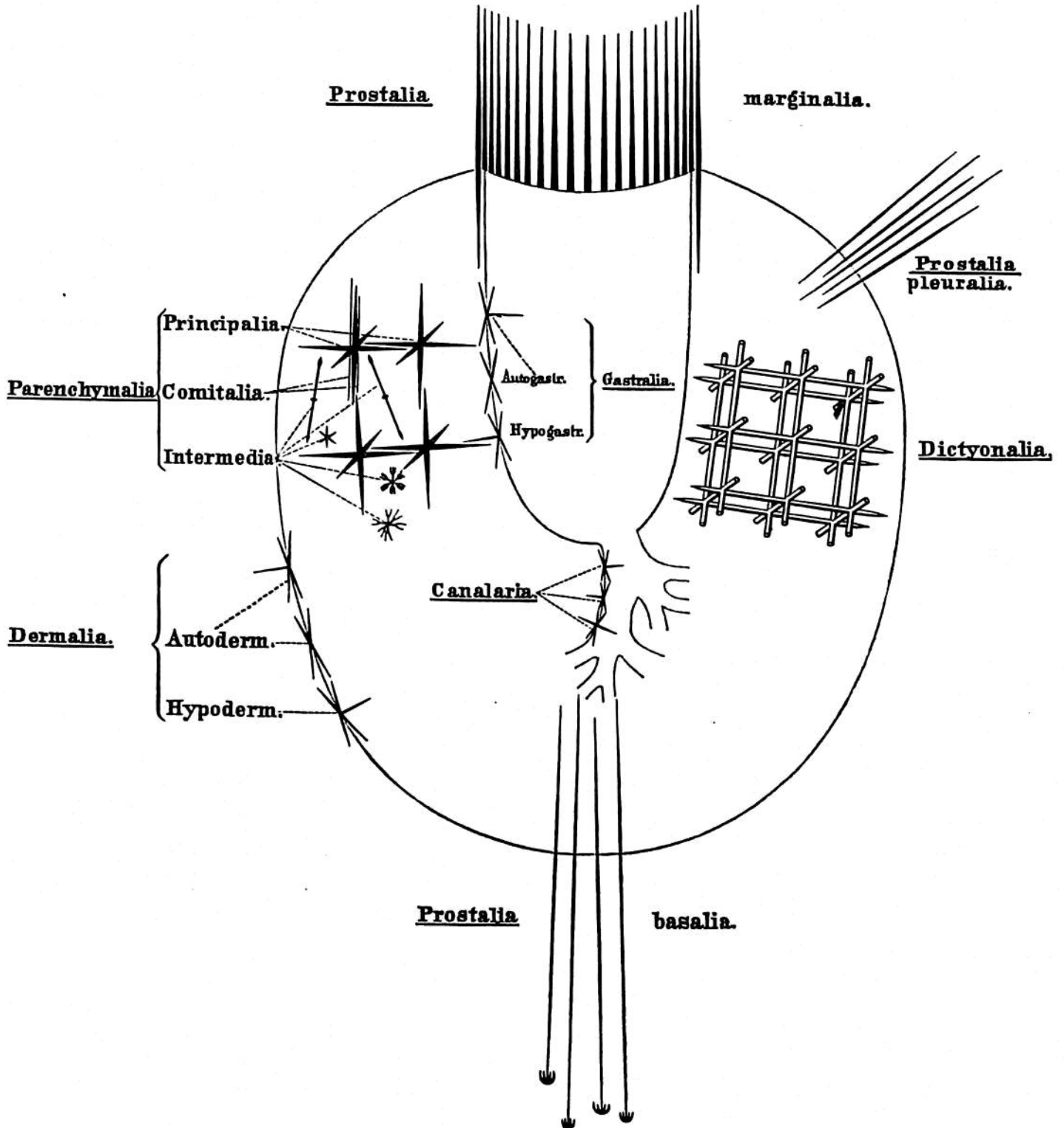


FIG. 2.—Diagram of the arrangement of the Spicules.

grows on a firm substratum, exhibits no trace of such a structure. It is, indeed, readily conceivable that one and the same species might, in different circumstances, produce a root-tuft or not.