

*Archæastacus willemæsii*,<sup>1</sup> the name by which I propose to call this fossil specimen

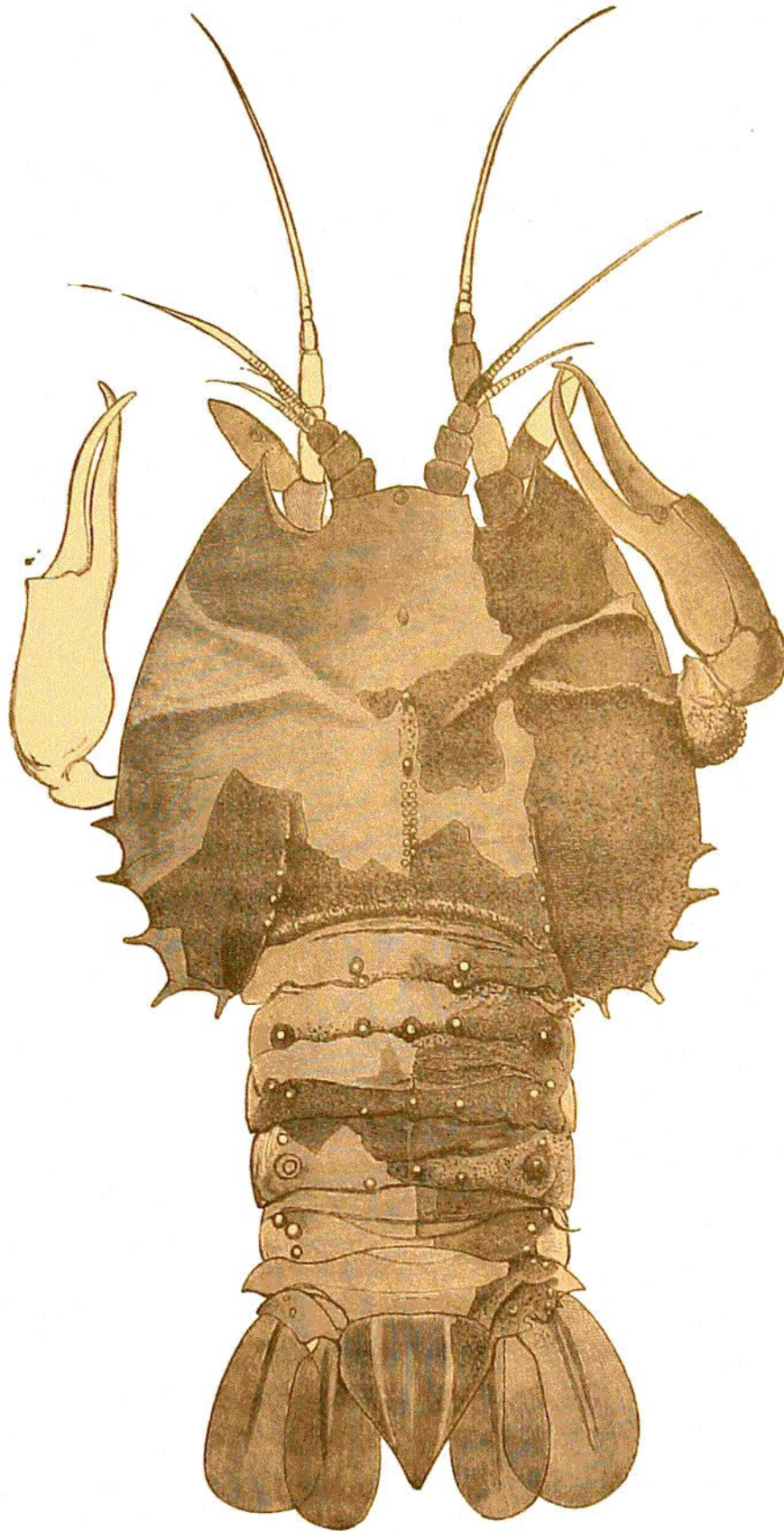


FIG. 29.—*Archæastacus willemæsii*, Sp. B., from the Lias of Lyme Regis.

has the dorsal surface of the carapace almost circular. The anterior or frontal margin being nearly straight between the orbital notches, while beyond them the lateral angles

<sup>1</sup> *Brit. Assoc. Report*, 1883; *Geol. Mag.*, dec. iii., vol. i. p. 307, pl. x., 1884. Beneath the plate in the Geological