

median fissure. The limbs of the mandible are ankylosed at the point of junction

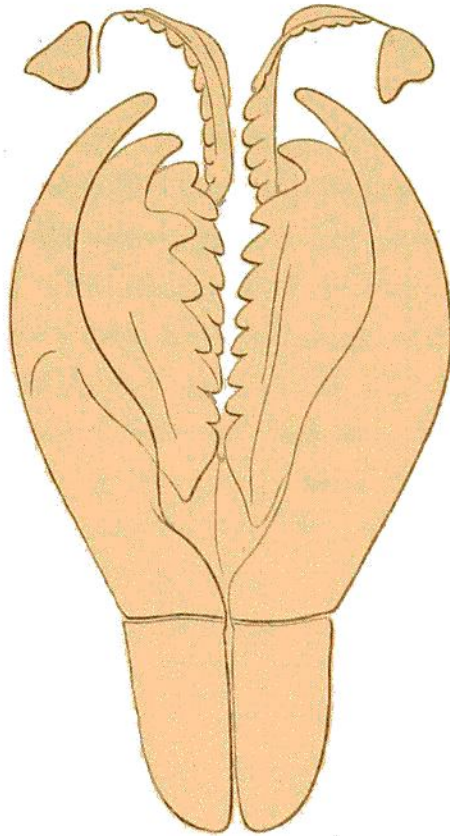


Fig. 66.

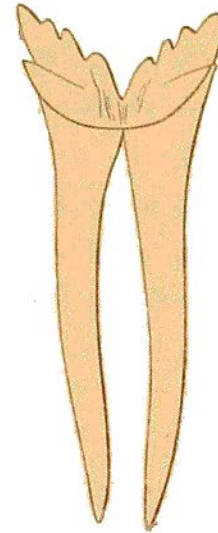


Fig. 67.

FIG. 66.—Maxillæ and dental plates of *Nothria sombreriana* ; $\times 54$ diameters.

FIG. 67.—Mandibles of the same, from the ventral surface ; $\times 15$ diameters.

anteriorly, and shortly behind the curved pigment-band are separated by a considerable

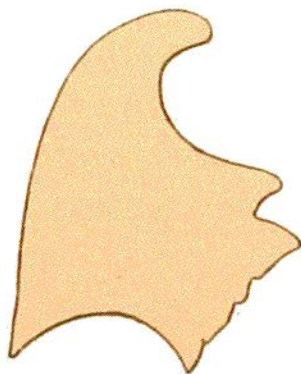


Fig. 68.

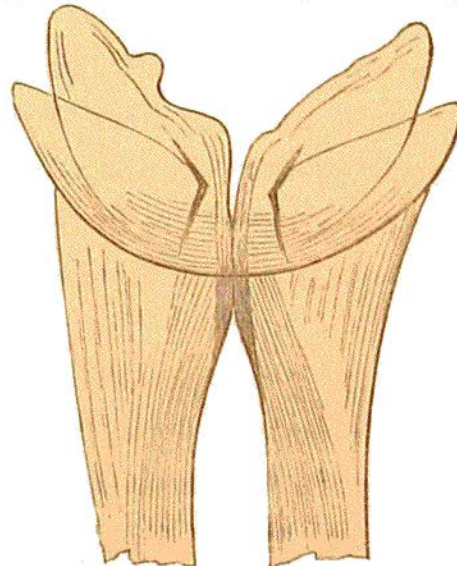


Fig. 69.

FIG. 68.—Left great dental plate (soft) of another example ; $\times 20$ diameters.

FIG. 69.—Dental margins of the mandibles exhibiting the ledge behind the crown ; $\times 54$ diameters.

interval. There is a deposit of dark brown pigment in the anterior part of the shafts, chiefly noticeable on the ventral surface.