

over, primary orifice arched above and sinuate below; afterwards crescentic and narrow owing to the rising in front of it of a thick transverse bridge beneath which is formed the suboral pore, often divided into two; and on each pier of the bridge a minute avicularium. Avicularian cells all marginal, with a short strong curved mandible pointing upwards.

*Habitat*.—Samboangan, 10 fathoms.

The chitinous appendages shown in the woodcut consist of *a,a*, probably immature zoœcial opercula which are rare; *b,b*, oœcial opercula; *c,c,c*, zoœcial opercula, which are thick and solid and often cracked down the middle; *d*, the mandible of a marginal avicularium; *e,e*, mandibles of frontal avicularia.

(2) *Adeonella platatea*, Busk (Pl. XXI. figs. 4, 4*a*, excluding the branched figure).

*Eschara platatea*, Bk., Brit. Mus. Cat., pt i. p. 90, pl. cv. figs. 1, 2, 3, and pl. cviii. fig. 4; Macgilliv., *loc. cit.*, Dec. vol. v. p. 41, pl. xlvi. fig. 4.

? *Eschara hexagonalis*, Haswell, Proc. Linn. Soc. New South Wales, 1881, vol. v. p. 41, pl. iii. figs. 1, 2.

*Character*.—Zoarium branched or irregularly lobate. Cells trimorphous. Zoœcia very uniform, hexagonal; convex or tumid in front with a smooth, uneven, entire surface, obscurely pitted round the border; in the older cells hollowed slightly in front. A large circular pore placed in the upper part of the front, on the sides one or more small avicularia (often absent). Orifice orbicular, with a thick rounded entire peristome. Oœcial cells larger, barrel-shaped, the wall closely punctate. Orifice (primary) broadly clithridiate or sinuate, afterwards semicircular or subcrescentic; a large suboral pore formed by the inarching of two tubercular processes, one on each side of the orifice and forming a bridge, beneath which is the pore, often divided into two; and on either side of the bridge a minute avicularium. Avicularian cells marginal or sometimes intercalated, the latter having a strap or spoon-shaped mandible.

*Habitat*.—Station 201, lat. 7° 3' N., long. 121° 48' E., 82 to 102 fathoms, stones and gravel.

[Bass Strait; off Cape Capricorn, Voy. of Rattles.; Queenscliff, Victoria, Macgillivray.]

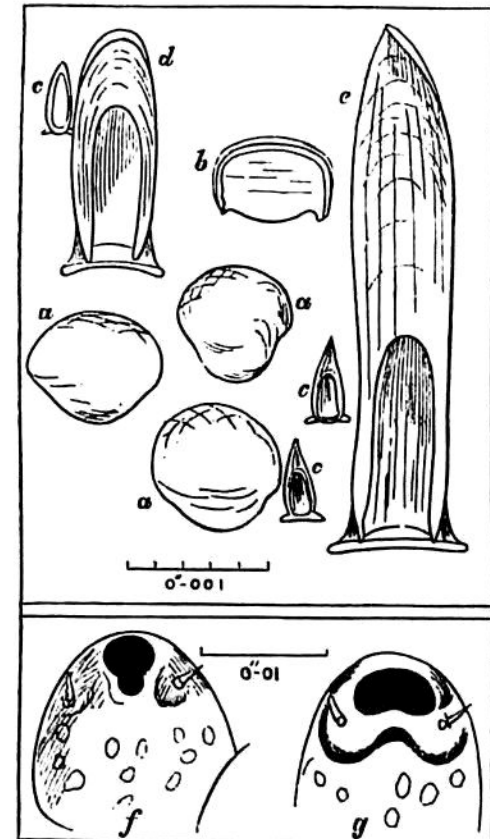


FIG. 50.—*Adeonella platatea*. *a, a, a*, Zoœcial opercula; *b*, an oœcial operculum; *c, c, c*, frontal avicularia; *d*, one of the intercalated avicularia; *e*, one of the marginal avicularia; *f*, primary mouth of a zoœcial cell; *g*, a secondary mouth.

The specimens of this species in the Challenger Collection are only a few small fragments, but in fair condition and sufficient to render