

regards the latter, that the North Atlantic region afforded 2 species; the South Atlantic, 4 species; the South Indian or Kerguelen region, 2-3 species; Australian, 2 species. None seem to have occurred in the Philippine or Pacific regions.

*a. simplices.*

(1) *Salicornaria clavata*, n. sp. (Pl. XII. fig. 8).

*Cellaria fistulosa*, Macgillivray, Nat. Hist. Vict.; Dec. v. p. 47, pl. xlix. fig. 1 (*nec* Linn.).

„ „ var. *australis*, Hincks, Ann. and Mag. Nat. Hist., ser. 5, vol. xiii. p. 368, 1884.

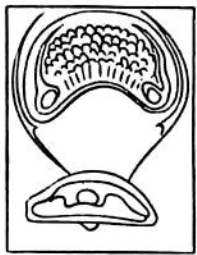


FIG. 5.—*Salicornaria clavata*.

*Character*.—Zoarium radicate, either simple and clavate, or with irregular loosely attached branches or offsets. Areas rhomboidal or sometimes truncato-hexagonal. Surface smooth. Orifice crescentic, lower lip prominent. Avicularia intercalated, mandible semicircular,  $0''\cdot002 \times \cdot0055$ , with a central opening and subbasal tubercle. Operculum,  $0''\cdot006 \times \cdot0045$ , semicircular, crescentic below, with a wide granulated band.

*Habitat*.—Station 149D, Royal Sound, Kerguelen Island, 28 fathoms, volcanic mud. Station 151, off Heard Island, 75 fathoms, volcanic mud. Station 162, off East Monceur Island, Bass Strait, 38 fathoms, sand and shells. Station 163B, off Port Jackson, 35 fathoms, hard ground. Station 304, lat.  $46^{\circ} 53' S.$ , long.  $75^{\circ} 12' W.$ , 45 fathoms, green sand. Prince Edward Island.

[Queenscliff, Portland, Maplestone.]

*β. articulata.*

(a) *tubulata.*

(2) *Salicornaria simplex*, n. sp. (Pl. XXXIII. fig. 8).

*Character*.—Zoarium 1 to 3 inches high, composed of tolerably thick internodes, from  $\frac{1}{4}$ th to  $\frac{1}{2}$  inch long and pretty uniform in length in the same zoarium; branching dichotomously.

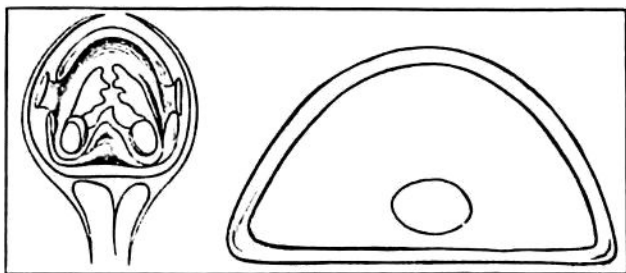


FIG. 6.—*Salicornaria simplex*.

Areas (in mature parts) rhomboidal or sometimes hexagonal, remarkably regular and uniform. Surface (beneath the epitheca), finely granular. Orifice nearly central, suborbicular, with two pointed denticles above and below. Operculum arcuate,  $0''\cdot0055 \times \cdot005$ , with a branched chitinous support on each side; the lateral trabeculae meet below the orifice and from the transverse portion three pointed filaments depend. Avicularia (when present) vicarious, with a very large semicircular mandible  $0''\cdot0075 \times \cdot0135$  pointing upwards.

portion three pointed filaments depend. Avicularia (when present) vicarious, with a very large semicircular mandible  $0''\cdot0075 \times \cdot0135$  pointing upwards.