

seawards of those forms which have occupied a continuous series of successive belts from the shore, virtually ceases; and that in the succeeding belt where the influence of the climate of the region, derived from solar heat or from surface currents, is nearly lost, the

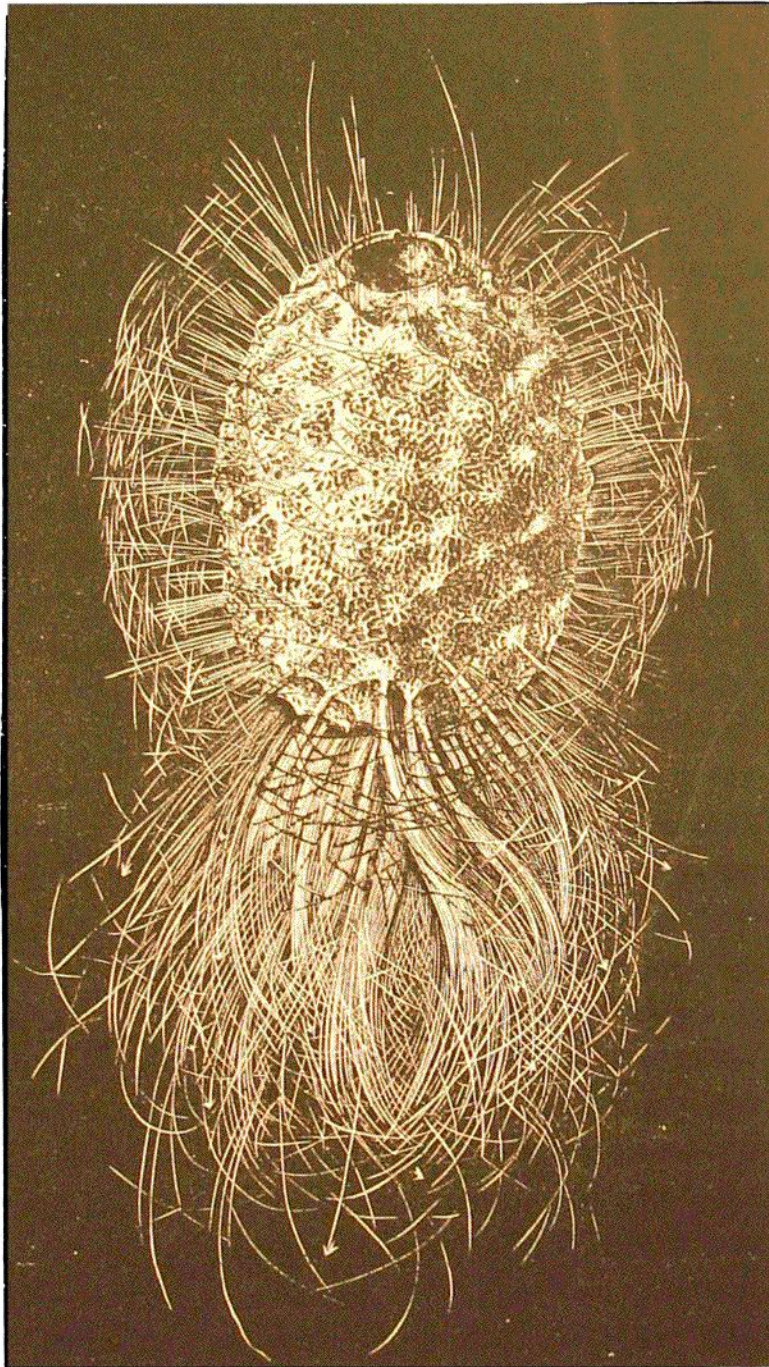


FIG. 16. --*Rossella celata*, Wy. 'T'. A Hexactinellid Sponge (natural size).

number of animal species is at least greatly reduced. It has now been shown that an entirely azoic belt does not exist.

The distribution of the fauna of shallow water depends, like that of the land, chiefly