

“Valdivia.” The “Michael Sars” captured no less than seven specimens,

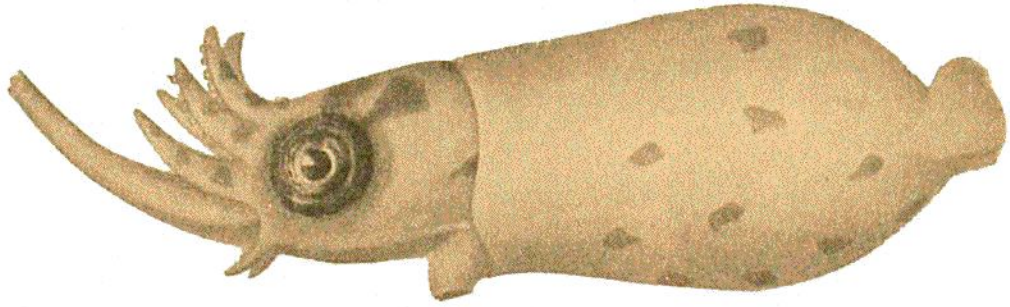


FIG. 441.
Larva of *Ommatostrephes* (Larva). (From Chun.)



FIG. 442.
Toxuma belone, Chun. About
nat. size. (From Chun.)

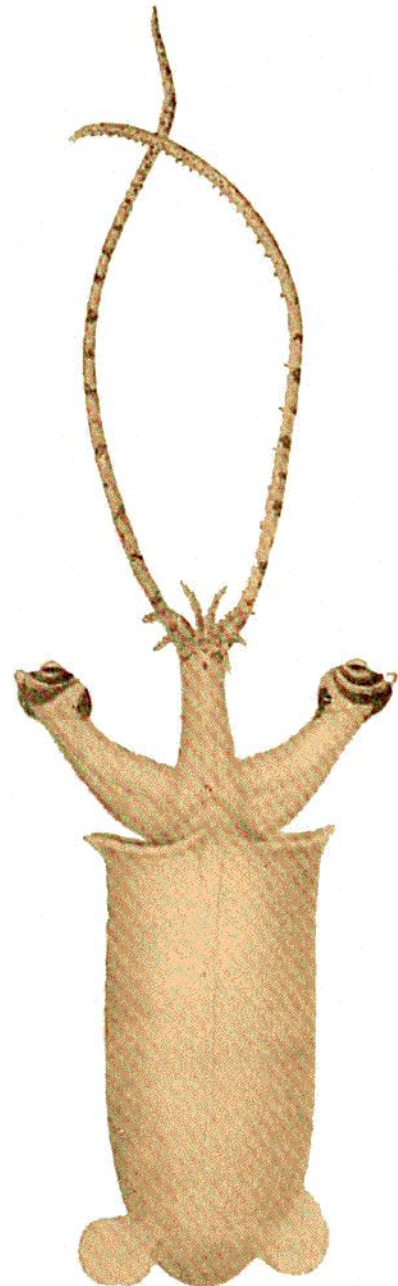


FIG. 443.
Bathothauma lyromma, Chun. Two-thirds nat. size.
(From Chun.)

in different interesting stages of development, around the Canaries and