

where between 2000 and 3000 metres ; the temperature at the same time falls to about $2\frac{1}{2}^{\circ}$ C., which prevails everywhere in

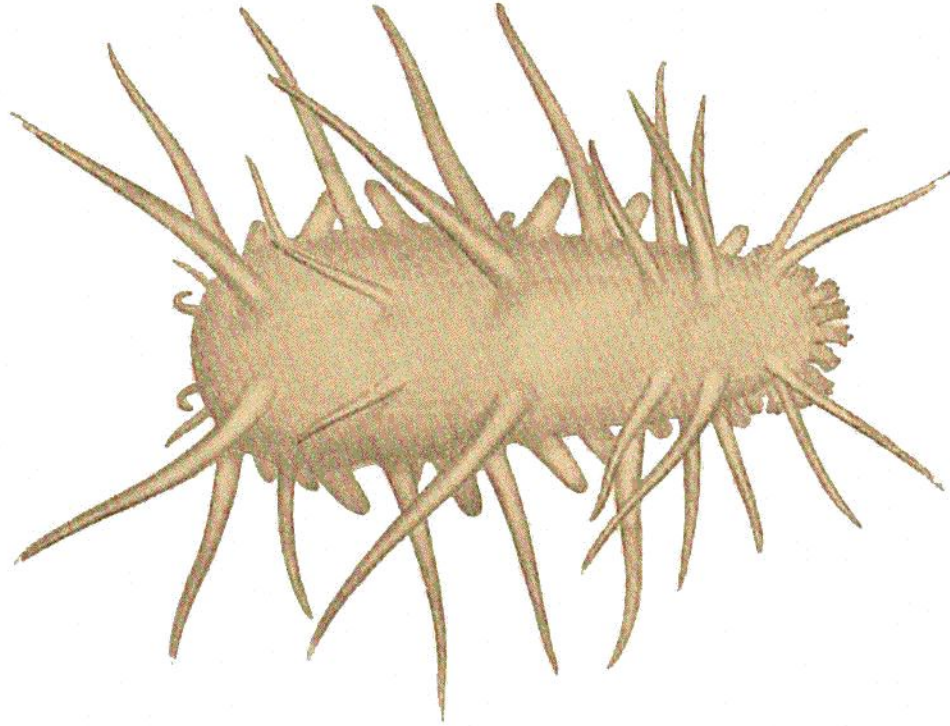


FIG. 386.

Oneirophanta sp. "Michael Sars," 1910, Station 10, 4700 metres.

the abyssal tracts of the Atlantic and other non-arctic waters. The upper limit certainly presents greater difficulties, but I

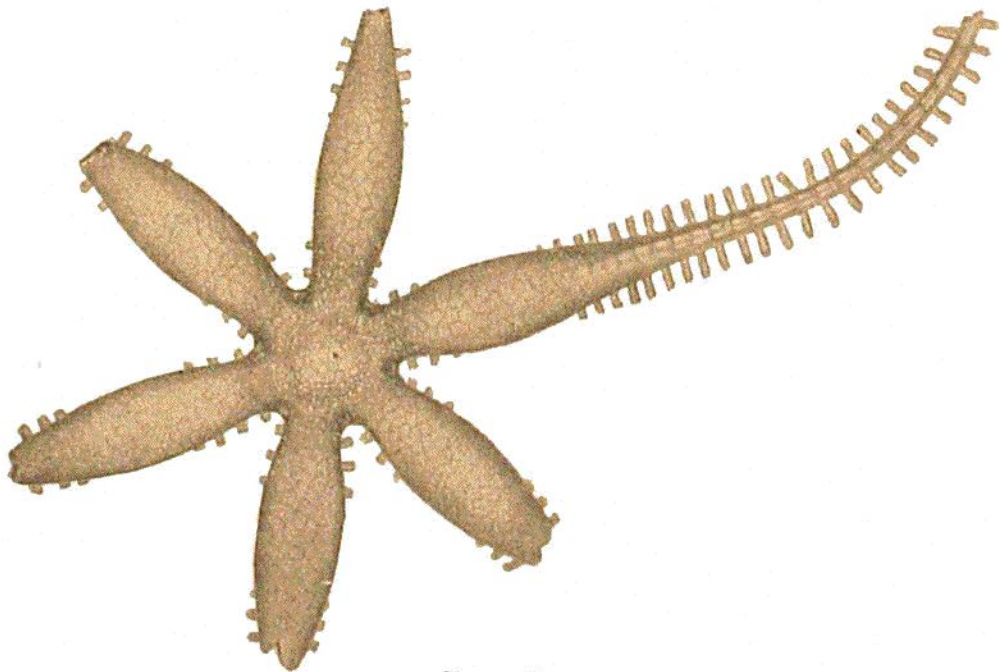


FIG. 387.

Freyella sexradiata, Perrier. "Michael Sars," 1910, Station 10, 4700 metres.

believe that a great many of the forms which characterise the archibenthal belt do not as a rule extend into depths less than