

some differences between them. Thus several forms that abound on the west coast of Norway are absent from the Skagerrack coast, if we may judge from my observations at Risör in Norway compared with the researches of Théel at Kristineberg in Bohuslän.¹ For instance, *Cucumaria frondosa*, a littoral echinoderm common on the North Sea coast, has not been met with in the Skagerrack, and *Ophiocoma nigra* is very rarely found in the latter area. *Echinus acutus* occurs in enormous quantities on the North Sea coast, but is extremely

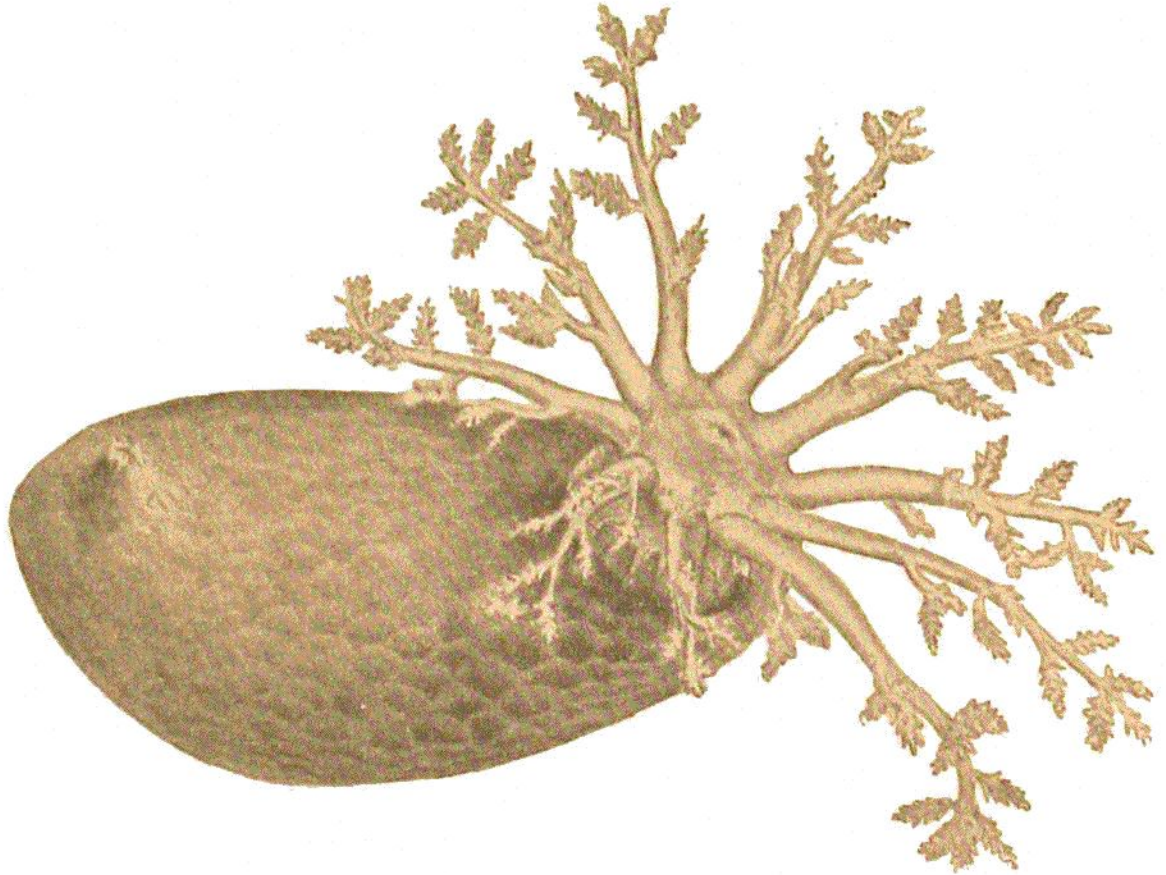


FIG. 346.
Psolus squamatus, Koren.

rare on the Skagerrack coast, while the mussel, *Lima hians*, has not been met with on the Bohuslän coast of Sweden, though in certain localities of the Norwegian west coast it is one of the most characteristic forms of the littoral fauna. On the other hand, the Skagerrack coast is the home of certain littoral forms which occur but rarely on the coast of the North Sea. Thus on the west coast of Norway *Echinocardium cordatum* is seldom found, and then only in a few special localities, whereas in Bohuslän it seems to be one of the

¹ Théel, "Om utvecklingen af Sveriges zoologiska hafsstation Kristineberg och om djurlifvet i angränsande haf och fjordar," *Arkiv. f. Zoologic*, Bd. iv., 1907.