

to Iceland, we shall at the same time trace the limit between the cold-water fauna of the deep basin and the boreal fauna of the slope of the coast plateau. Within this boreal region we may discern different areas of distribution. The ling, for instance, is caught off the coast of Norway in abundance as far north as Lofoten ; north of Lofoten, between the Faroe Islands and Iceland, and at Iceland, the ling is only poorly represented,

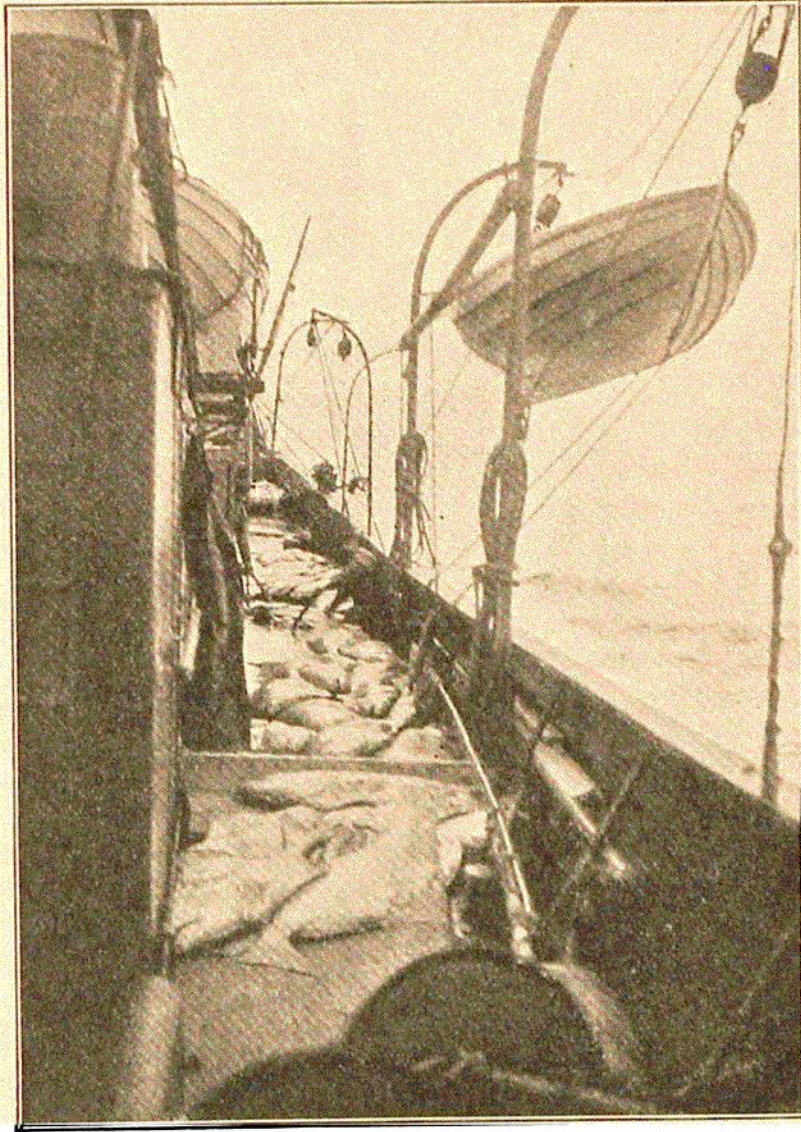


FIG. 314.—THE "MICHAEL SARS" FISHING HALIBUT ON THE SLOPE.

while the cod there plays an important part in the "edge" fishery during the summer. Large halibut, from 50 to 150 kilos in weight, on the other hand, occur on the slope from west of Bear Island, round the North Sea plateau, the Faroe Islands, and on to Iceland. The Norway haddock has a similar distribution to that of the large halibut.

The fauna of the eastern and southern slopes of the Norwegian Sea thus proves to be very uniform for a distance of