

Traces of albuminoid organic matter may be found in most Albuminoid matter.

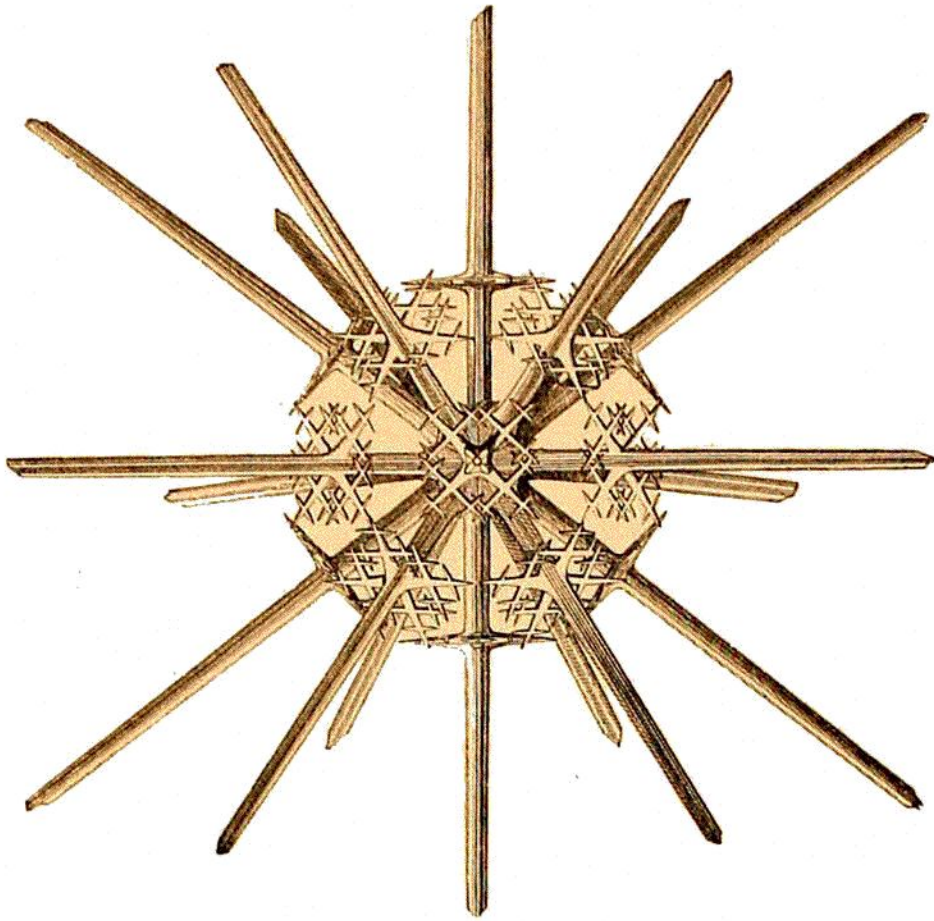


FIG. 111.
Stauracantha murrayana, Haeckel. From the surface (magnified).

deep-sea deposits, especially in the neighbourhood of land, and

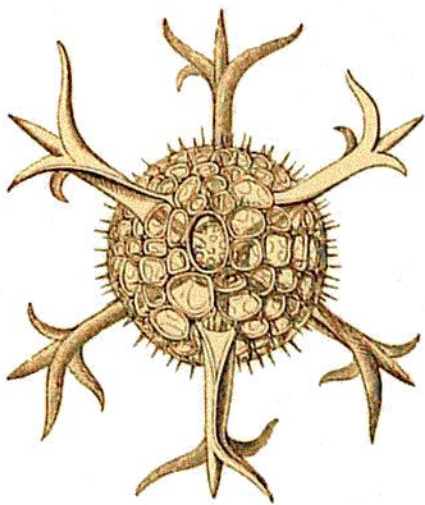


FIG. 112.
Hexancistra quadricuspis, Haeckel.
From the surface (magnified).

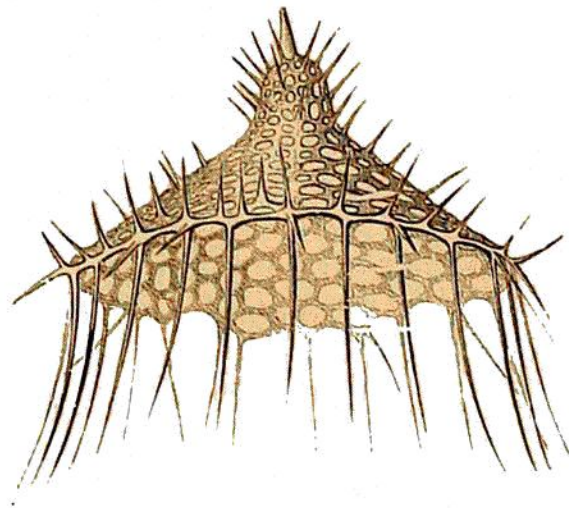


FIG. 113.
Lampromitra huxleyi, Haeckel.
From the surface (magnified).

may be either of animal or vegetable origin ; a greenish organic matter is generally associated with the glauconite in the Green