

In addition to the silk nets Gran now commenced using his big steam centrifuge (Fig. 91) for centrifuging the water

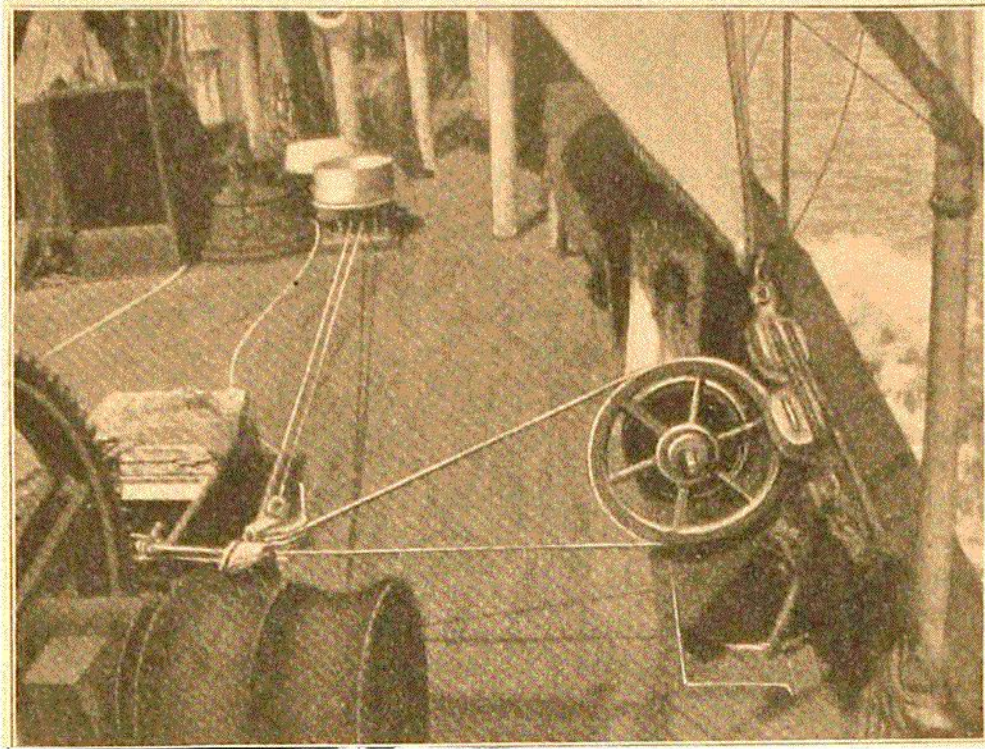


FIG. 91.—THE LARGE CENTRIFUGE.

samples from different depths. Several successful experiments had already been made with it, but it was at this station that he started to employ it systematically, and he continued to avail himself of its help until the end of the cruise. Use of the centrifuge.

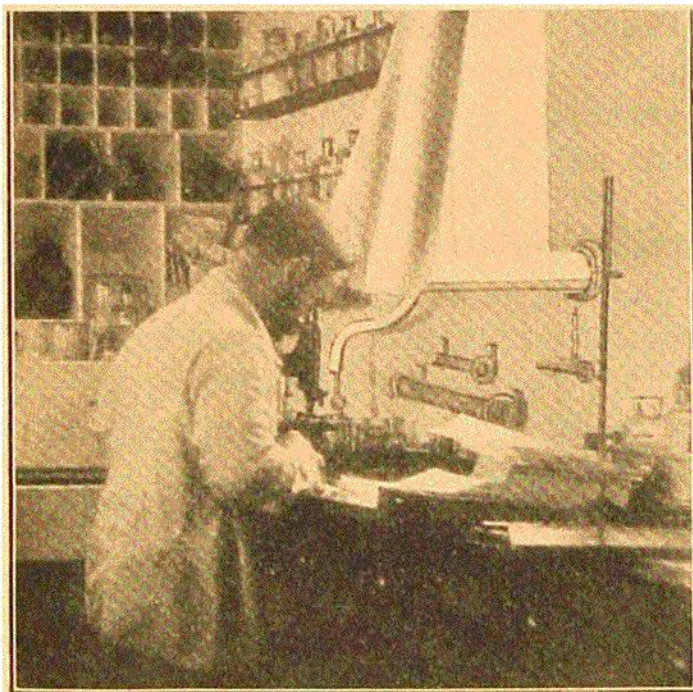


FIG. 92.—GRAN COUNTING THE SMALLEST MICROSCOPIC PLANTS.

draw them, and to count the number of the different species (Fig. 92). A full description of these investigations will be

had already been made with it, but it was at this station that he started to employ it systematically, and he continued to avail himself of its help until the end of the cruise. By means of it he was able to collect in a little drop below the microscope all the most minute organisms, and in spite of the movements of the little ship and the vibration from the propeller, he was able with his microscope to study the many hitherto unknown forms in their living state, to