

steel wire soon wore deep grooves in them. Our trawlings, too, took a long time, for the 20 horse-power winch that wound in

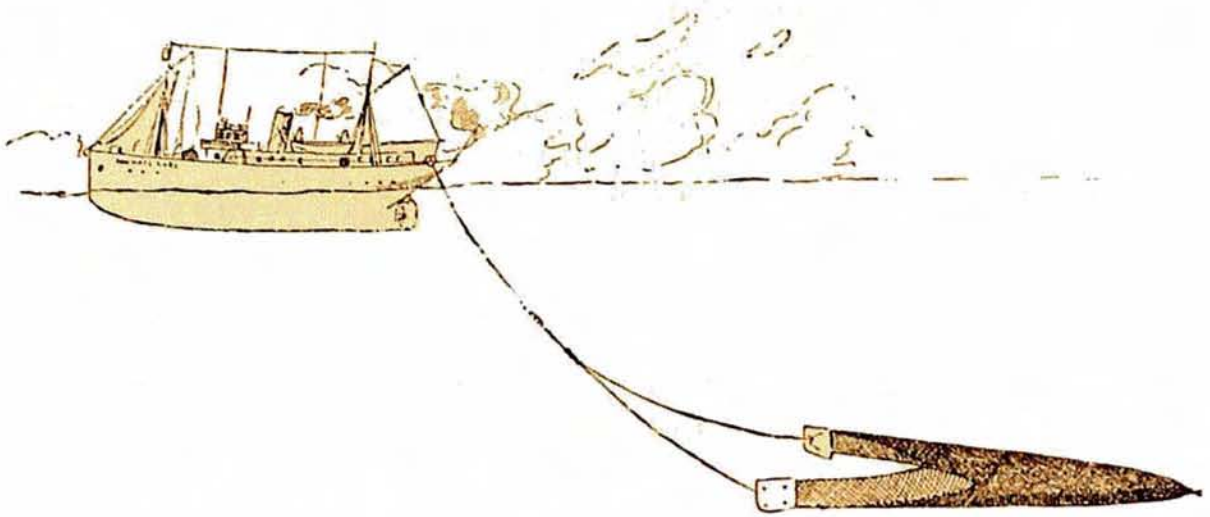


FIG. 26.—THE "MICHAEL SARS" TRAWLING WITH ONE WIRE ROPE AND OTTER TRAWL.

the wire directly on to the drum was unable to maintain its full speed when the load was unduly heavy.

Time for  
trawling in  
deep water.

On 31st May, at Station 48, the trawl was shot at a depth of

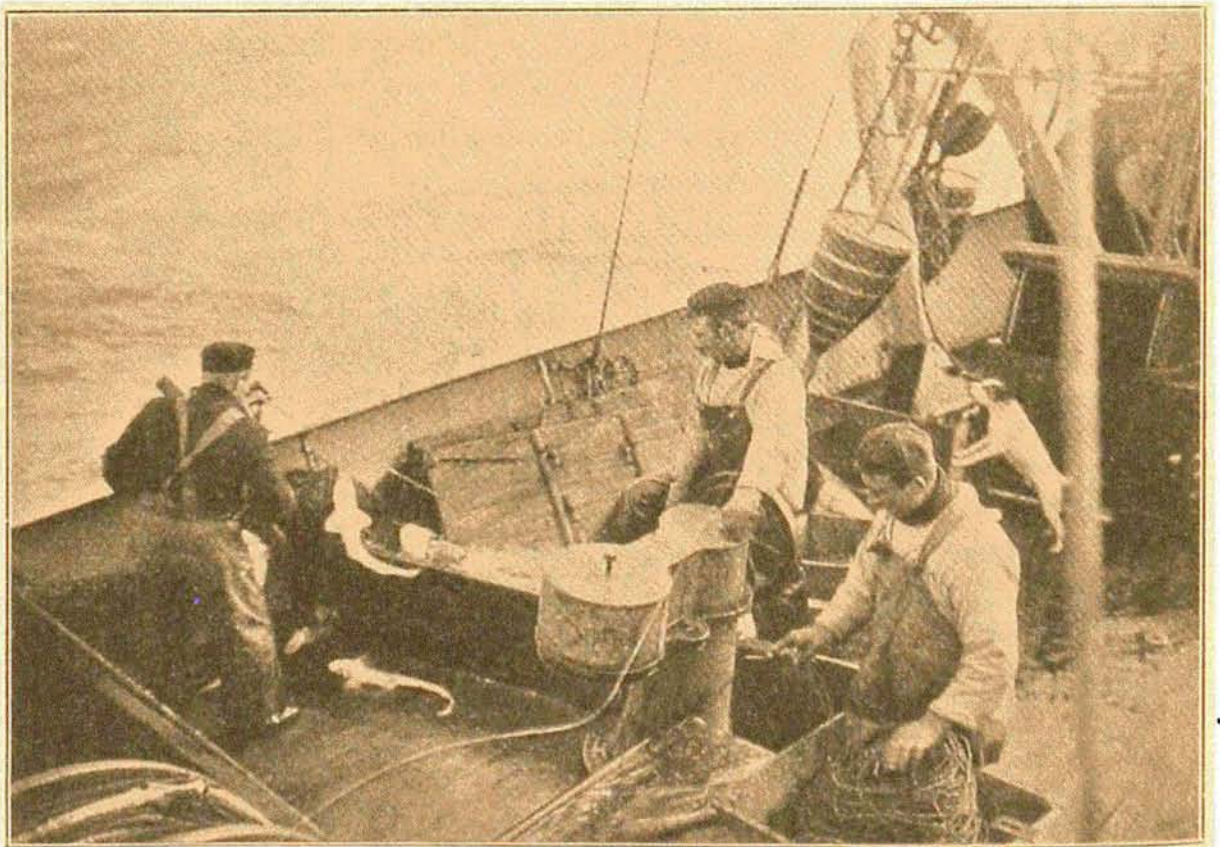


FIG. 27.—HAULING IN LONG LINES BY MEANS OF LINE WINCH.

5160 metres with 8750 metres of wire; we commenced lowering at 5.45 A.M. and started trawling at 11.20 A.M.; hauling in began at 2.50 P.M., and the trawl was once more on board at