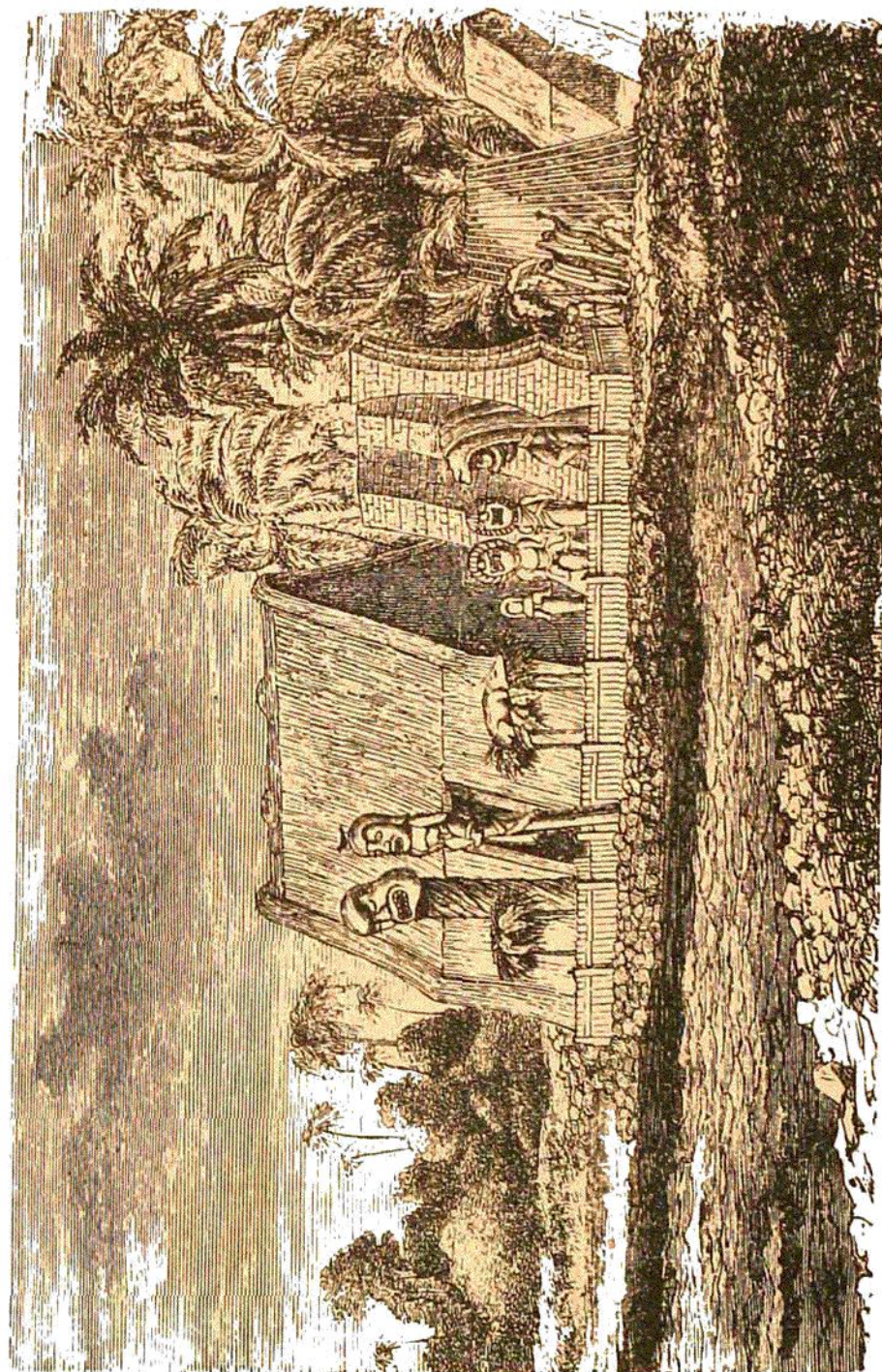


of the religion proceeded, in order to contain larger and larger offerings, and the head in the wicker-work image may have been hollowed out for a similar purpose.



MORAI OF TAMEHAMEHA AT HAWAII ISLAND.

All voyagers who saw the Hawaiian images speak of their huge mouths. Lisiansky, evidently describing the same images as those figured by Ellis, says that some of them bear huge blocks of wood on their heads, and have mouths reaching from