

numbers at the surface of the sea after calm weather. It has often been mistaken for *Noctiluca*.<sup>1</sup>

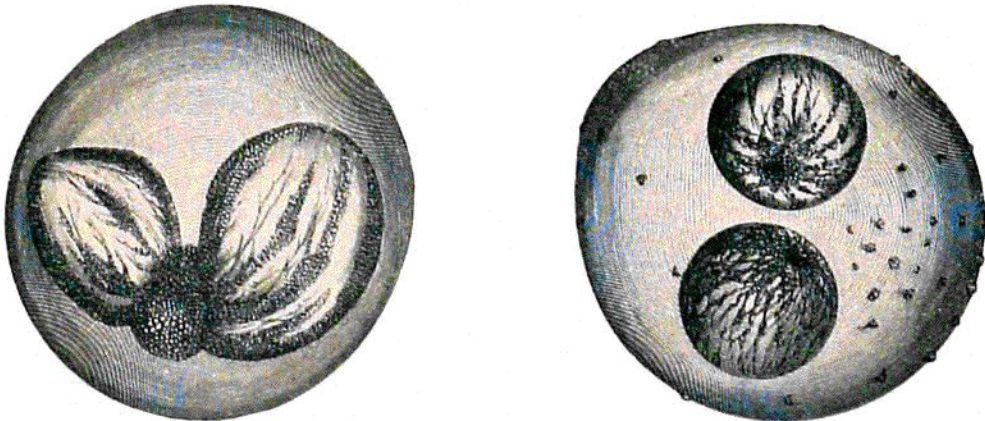


FIG. 337.—*Pyrocystis noctiluca*, Murray; 100 times the natural size.

“A second species, *Pyrocystis fusiformis*, is represented in fig. 338. It is not nearly so abundant as *Pyrocystis noctiluca*, but is nearly always present with it, and has the same

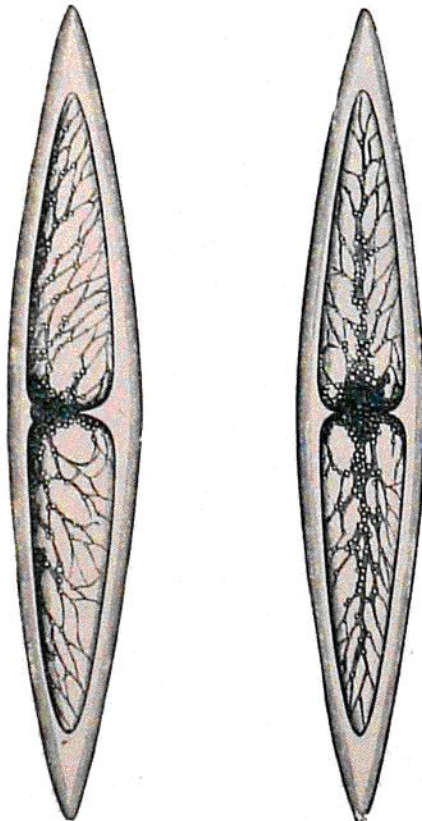


FIG. 338.—*Pyrocystis fusiformis*, Murray; 100 times the natural size.

<sup>1</sup> Prof. Langerhans says:—“*Pyrocystis noctiluca* is observed on the surface in the Bay of Funchal all the year round. From September to December many are in simple division. Having seen your drawings with the interval between inner ball and external capsule, I do not doubt for a moment the identity of the forms observed by us. In case you have not finished your Report you will oblige by mentioning its occurrence here, as I do not see the necessity for writing about it specially. I have never seen *Noctiluca* itself here.”—Letter to Mr. Murray.