

of the Paguridea appear to have a very wide geographical range ; thus, a species apparently identical with the well-known *Pagurus striatus*, Latr., of the Mediterranean, was taken at two Stations off the Philippines, and *Petrochirus granulatus*, Olivi, a native of the West Indies, was dredged at Simon's Bay, Cape of Good Hope. The collection contains several specimens of an interesting species, with a regularly segmented and calcified abdomen, showing a transition between the Paguridea and the Thalassinidea, trawled at Station 163A,

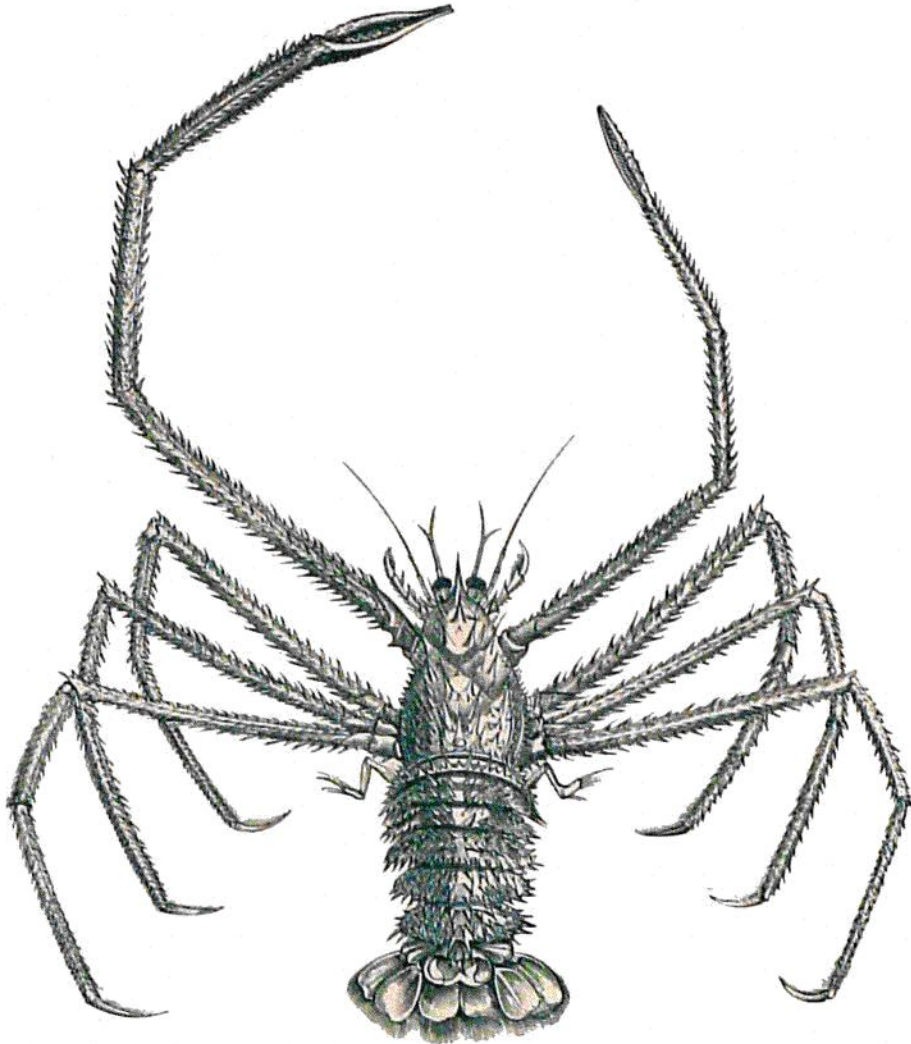


FIG. 330.—*Tylocheles milne-edwardsi*, n. sp.; natural size. Magellan Strait, 400 fathoms.

off Twofold Bay, Australia (120 fathoms). In many respects this singular Crustacean agrees with the description of A. Milne-Edwards' recently established genus *Pylocheles*, from the 'Blake' expedition, but differs strikingly in habit, as all the Challenger specimens occurred in a free condition. At Station 285, in the South Pacific, at a depth of 2375 fathoms, one of the most interesting forms in the collection was taken. The single specimen, type of a new genus and species (*Tylaspis anomala*) is essentially