

tion becomes much less. The chief interest of the specimens lies in the fact that no Coralliidæ have ever been recorded from the Malay Archipelago, and that the only localities in the Indo-Pacific area from which species of the family are known are Mauritius (*Corallium stylasteroides*) and Japan (*Pleurocorallium secundum*). Dana's locality of Sandwich Islands for the latter is very uncertain. The fragments (in the fossil state) described by Professor Duncan from New Zealand do not appear to throw light on the present specimens.'"

The Nudibranchiata.—Dr. Rudolph Bergh of Copenhagen, who has prepared the Report¹ on the Nudibranchiate Molluscs collected by the Expedition, has supplied the following note:—"The so-called Nudibranchiate Gasteropoda are distributed over all

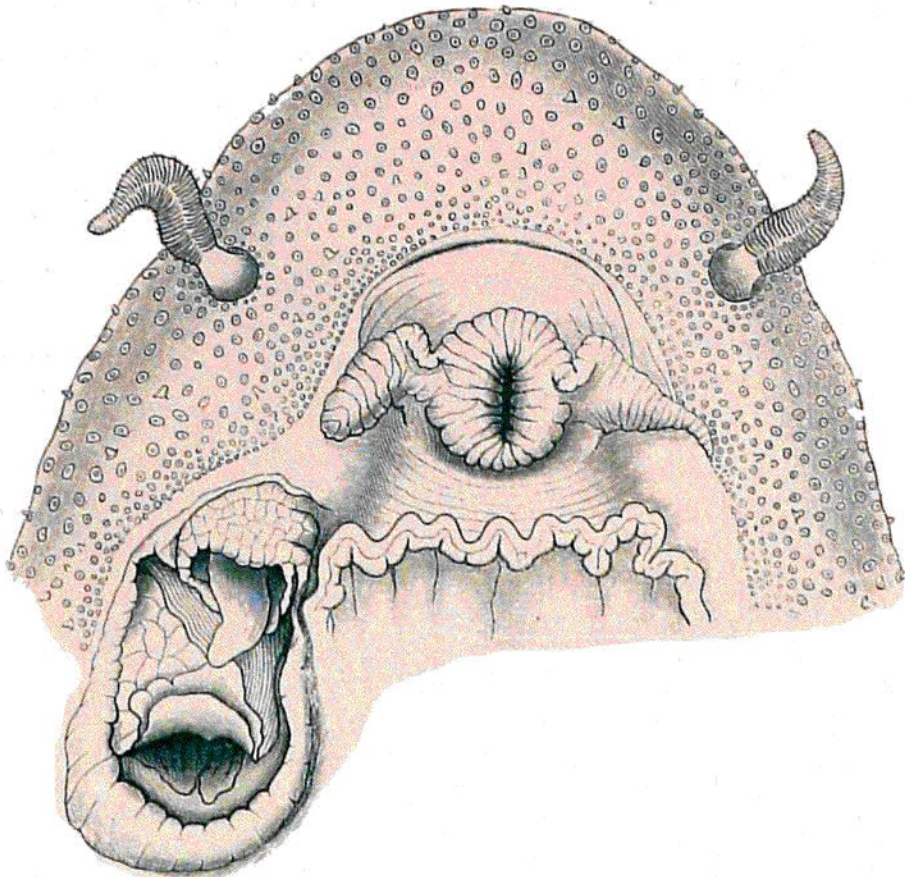


FIG. 237.—Inferior surface of anterior extremity of *Bathydoris abyssorum*, Bergh (natural size), showing the mouth, the two rhinophoria projecting from their sheaths, the two genital openings (from the anterior of which projects the large glans penis), and the anterior margin of the foot.

seas. Judging by the discoveries made by the Polar Expeditions they appear to be least common towards the Poles, while they are most abundant in the tropical and subtropical seas, in which latter there occur species of unusual size and most beautiful colour.

¹ Report on the Nudibranchiata, by Dr Rudolph Bergh, Zool. Chall. Exp., part xxvi., 1834.