

*Acanthozone tricarinata*, shown in fig. 208, enlarged. How far the present distribution into genera can be maintained under the light thrown on the subject by the details of structure found in new forms, will have to be discussed in the detailed Report. Meanwhile it is interesting to observe that wherever the species have been dredged, either in localities or at depths not previously explored, such species are almost invariably found to be new ones. Species living at or near the surface of the ocean, and not therefore requiring to be taken with the dredge, are, as might be expected, widely distributed. Some that occupy very moderate depths are found to be identical or scarcely distinguishable in

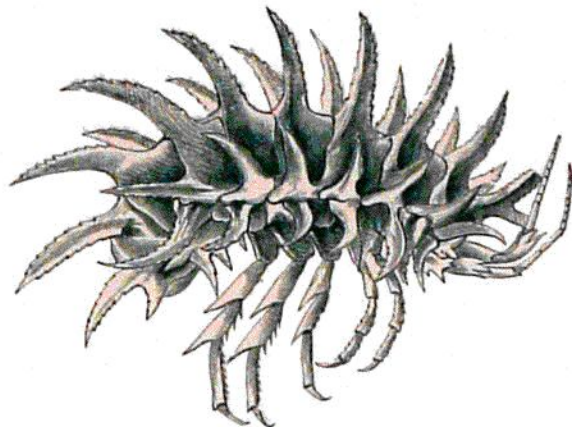


FIG. 208.—*Acanthozone tricarinata*, Stebbing.

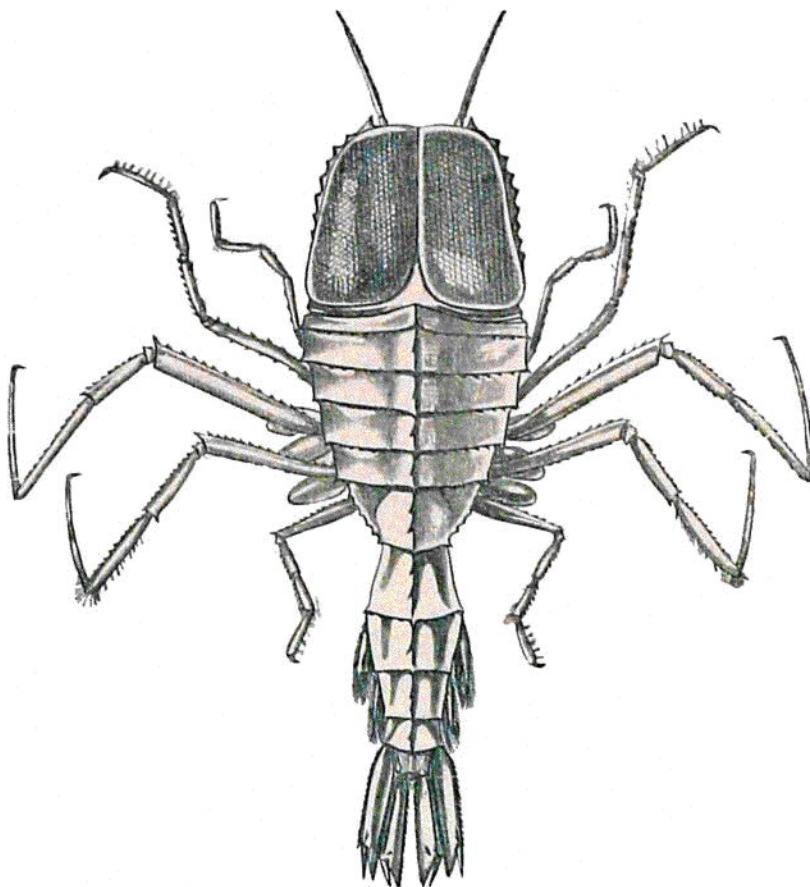


FIG. 209.—*Cystosoma neptuni* (Guérin-Ménéville), Suhm ; slightly reduced.

form at the most widely separated localities, and it is possible that occasionally some specimens while living may have a free passage from one extremity of the