

"*Phoberus*, a genus named by Professor A. Milne-Edwards, was first taken by the Challenger in about 500 fathoms of water in the West Indies; it is nearly allied to the genus *Nephrops*, which lives at no very great depth, and it grows to a considerable

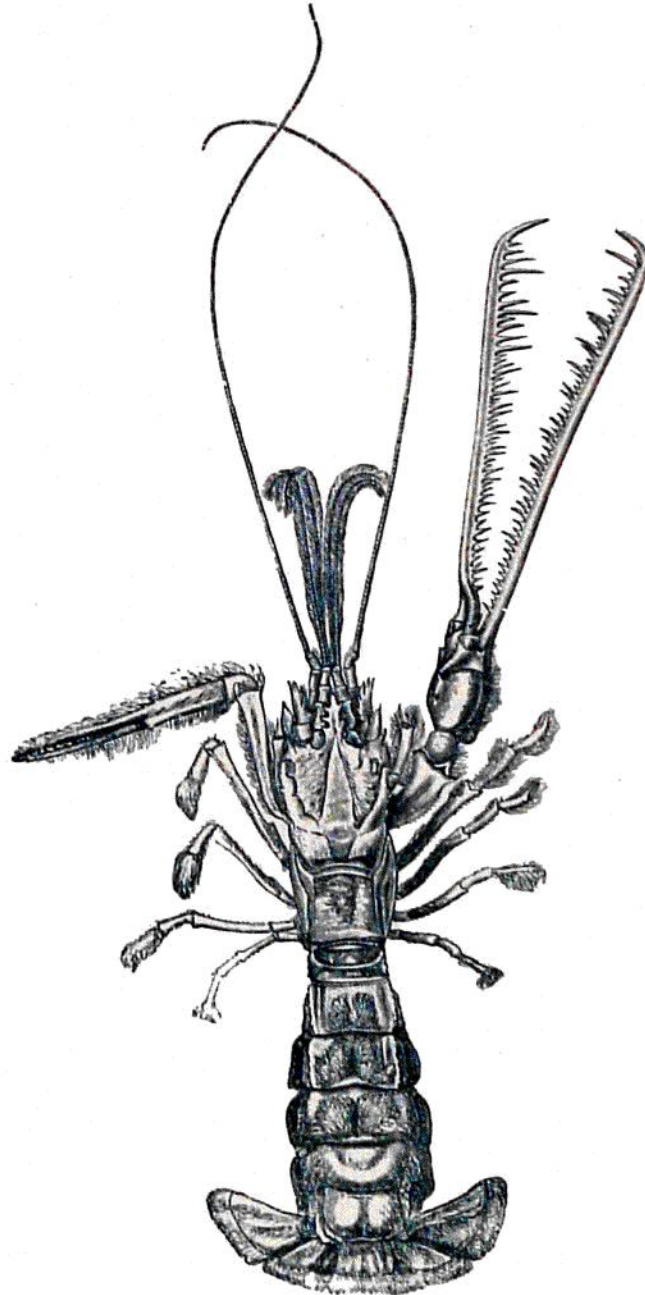


FIG 184.—*Thaumastocheles zalouca*, Salm; male, natural size. From 450 fathoms, off Sombrero, West Indies.

size, the Challenger specimen being eight inches in length, and that taken in the 'Blake' expedition being a little larger; the ophthalmopoda are reduced to the smallest dimensions, and the eye to a rudimentary condition.