

are numerous cirri which serve as tactile organs and organs of attachment; each parapodium contains a hook-apparatus with a complicated musculature. The tree-like ramified alimentary canal opens close to the anterior end of the body by the mouth, through which the pharynx can be extruded; the anus is situated close to the hinder margin, and

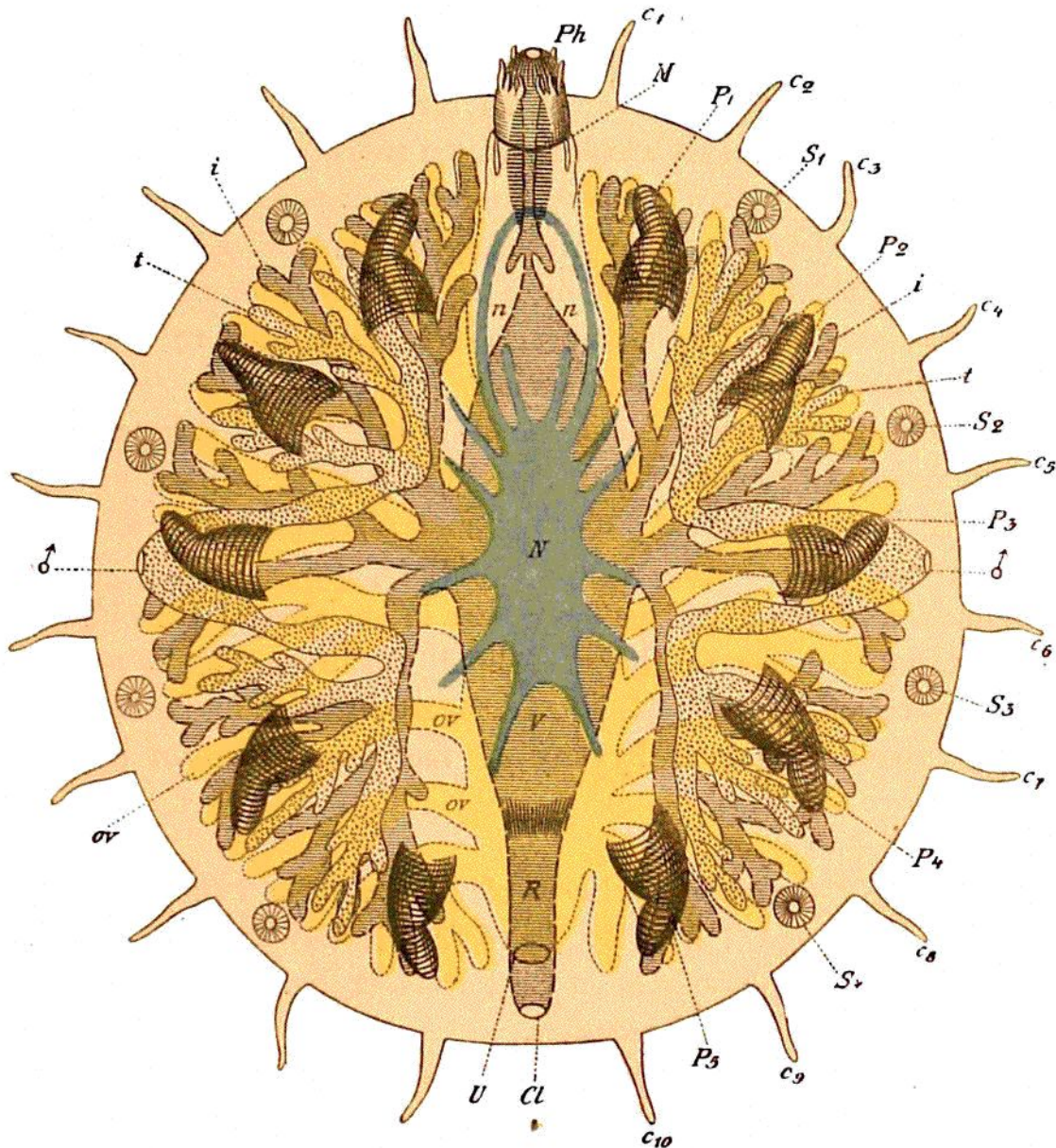


FIG. 125.—Diagram showing the Structure of *Myzostoma*.

$C_1$ - $C_{10}$ , the 10 pairs of cirri;  $Cl$ , cloacal opening;  $i$ , intestine;  $M$ , mouth;  $N$ , central nervous system (blue), with  $n$ , oesophageal ring;  $ov$ , ovarian tubes (yellow);  $P_1$ - $P_5$ , the five pairs of parapodia;  $Ph$ , pharynx;  $R$ , the rectum;  $S_1$ - $S_4$ , the four pairs of suckers;  $t$ , testicular follicles;  $U$ , opening of the uterus into the rectum;  $V$ , stomach;  $\delta$  the two lateral male genital openings.

receives also the duct of the branched ovarian tubes. The male sexual organs consist of two ramified testes which open on either side of the body by a separate opening. The nervous system forms a compact ventrally situated ganglionic mass, from the anterior end of which is given off a simple nerve ring enclosing the pharynx. This description holds