

probably of considerable length, but owing to the extreme softness of the tissues, only the anterior part remained in the dredge when hauled on board; it was distinguished by very lively colours, the proboscis *a* being yellow, the collar-like ring *b* bright red, and the body *c* yellowish-red. In the latter the two longitudinal folds *d* are the outer walls of the branchial apparatus, and between them *e* the so-called median vessel. In the lower part the beginning of the ovary was also observed. From

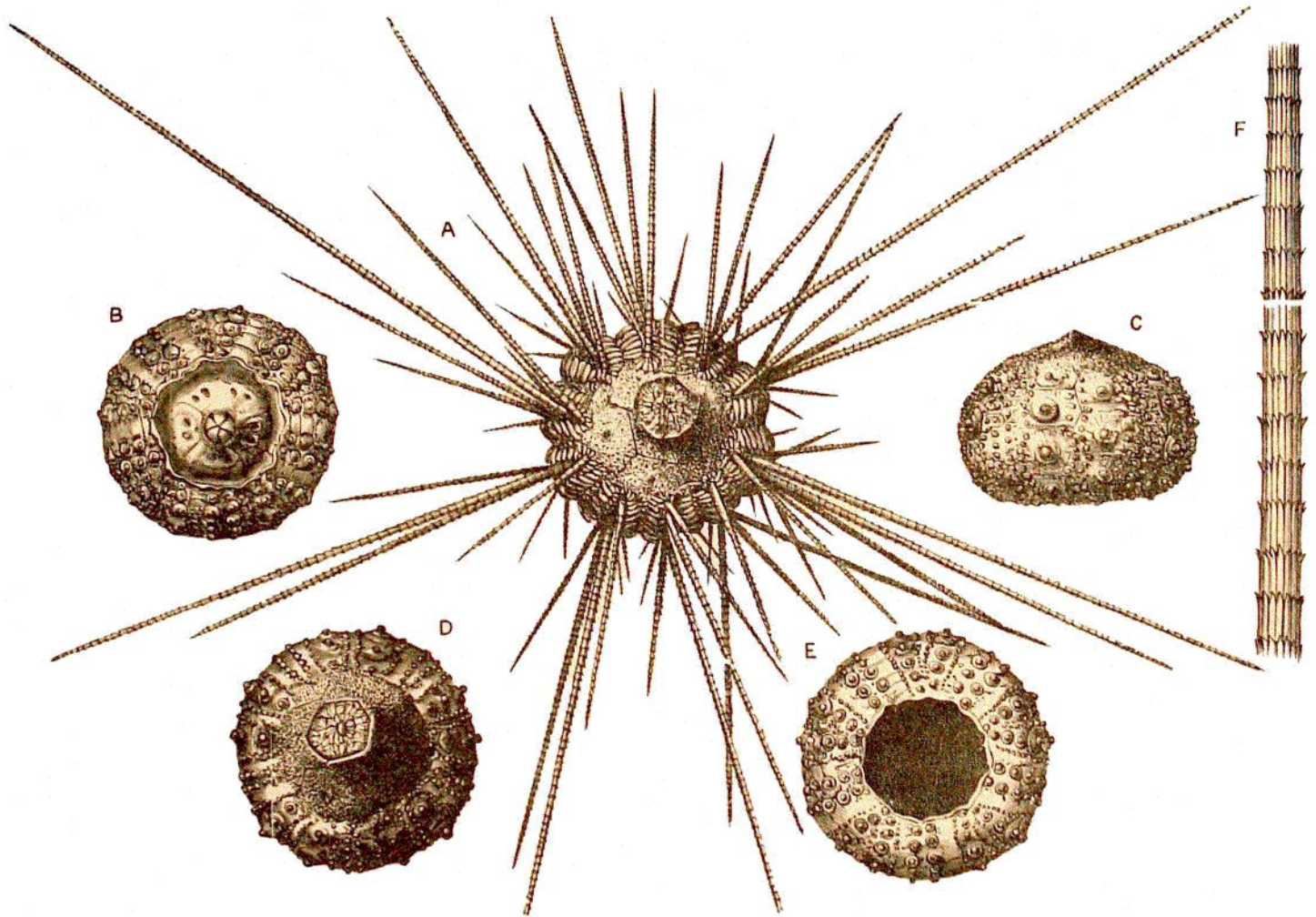


FIG. 79.—*Salenia hastigera*, A. Ag.

A, Abactinal view of specimen, measuring 14 mm. in diameter; B, young specimen, measuring 9 mm. in diameter, seen from the actinal side; C, specimen seen in profile, denuded of spines, 13 mm. in diameter; D, the same, seen from the abactinal side denuded; E, the same seen from the actinal side; F, magnified portion of primary spine.

this fragment it would hardly be permissible to establish a new species. *Balanoglossus* is likely to be found often in deep-sea dredging, and even the shallower water species may be met with, since they are always inhabitants of deeper water of the coasts and true mud animals. Head 18 mm. wide, 11 mm. high.

“At Station 106, 25th August 1873, 1850 fathoms, there were again in the trawl