

*Excursion up the Peak of Tenerife.*—As a means of testing the appliances of the Scientific Staff, and affording its members an opportunity of making a preliminary trial of their capabilities as collectors and observers, and accustoming themselves to exploring work generally, an excursion up the Peak was organised, and a party, consisting of Sub-Lieut. Lord George Campbell, Mr. Buchanan, Mr. Moseley, Mr. Murray, with a marine and a blue jacket, ascended the Peak as far as was found practicable during the absence of the vessel from the harbour. The island was crossed to the town of Orotava, on the opposite shore to Santa Cruz, and from thence the ascent was made

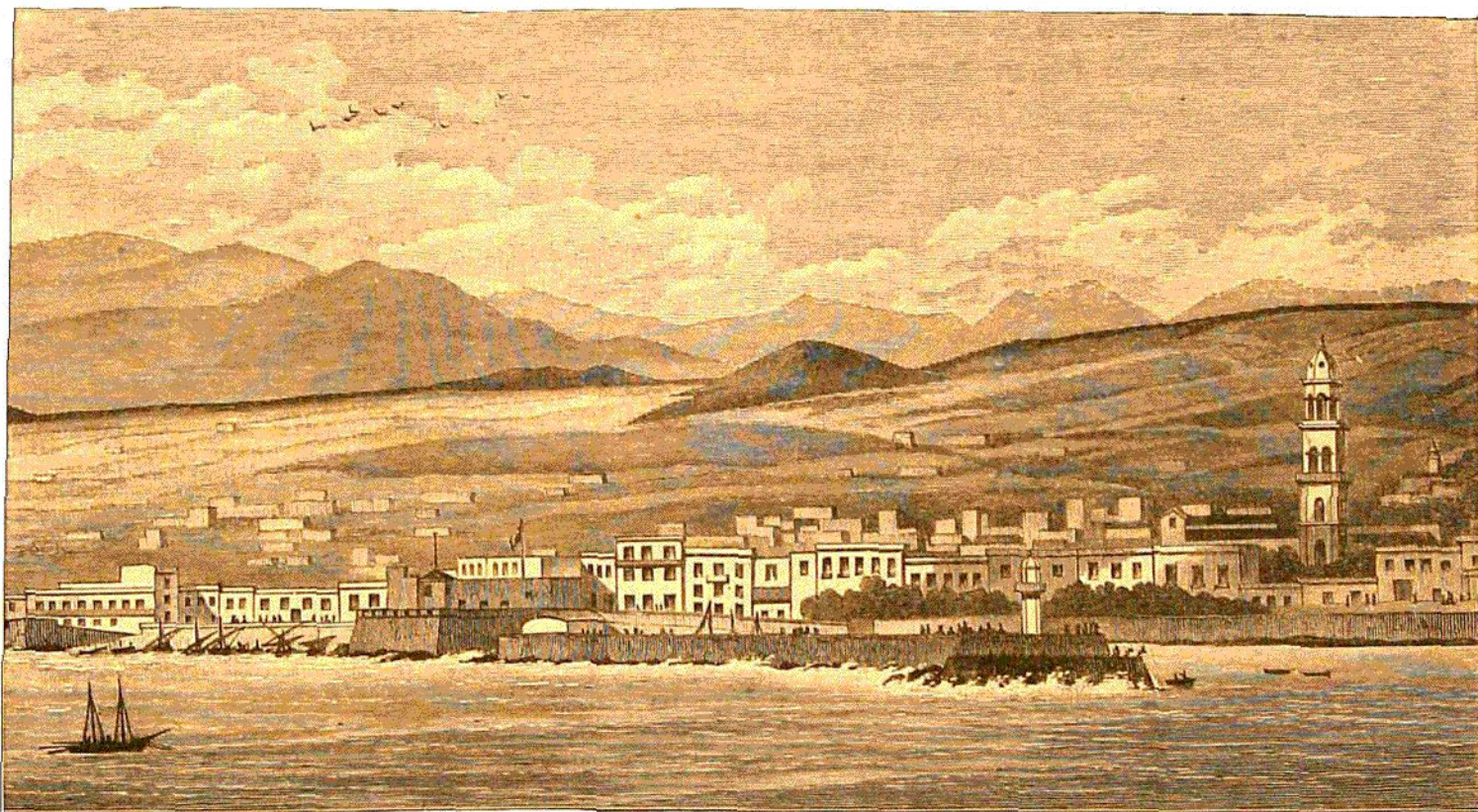


FIG. 11.—Santa Cruz, Tenerife.

by the usual route. From an elevated point on the road between the two towns the first view of the Peak (Pico de Teyde), which is not visible from Santa Cruz, was obtained. The middle part of the mountain was concealed by a dense bank of white clouds, the condensed vapour of the trade wind. Beneath, a broad valley stretching down to the bright blue sea with its snow-white edging of surf, was thrown partly into deep shadow by the cloud-bank, partly lit up by the bright hot sun, which shone brilliantly upon the snowy peak of the mountain, high up in the sky above the clouds. The town of Orotava was seen lying on the shore below.

Mr. Murray started for Orotava by stage-coach early on the 10th, and was followed later on the same day by the rest of the party. With the kind assistance of the British