

forms an exception in this particular among Palinurids, with which it has hitherto been arranged, and has the first pair of

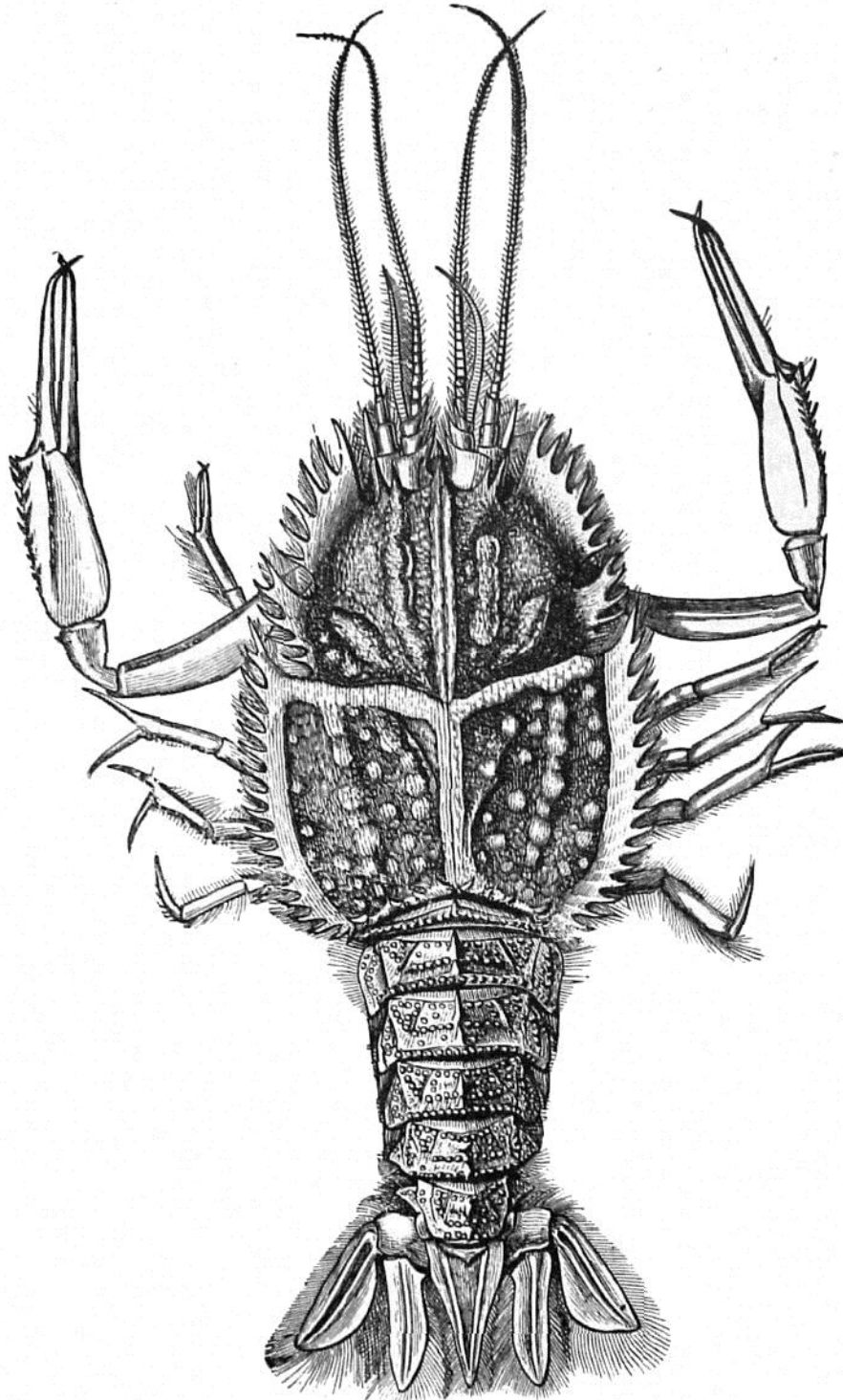


FIG. 59.—*Willemoesia crucifer*, VON WILLEMORS-SUHM, x 2. (No. 23.)

limbs didactylous, as in *Willemoesia*. It may also be noticed that *Eryon* is the only Palinurid which, like *Willemoesia*, has a