

FIG. 33.—*Phormosoma uranus*, WYVILLE THOMSON. Natural size. (No. 6.)

Lews, in having the calcareous pavement of the perisom continuous, no membranous spaces being left between the plates,

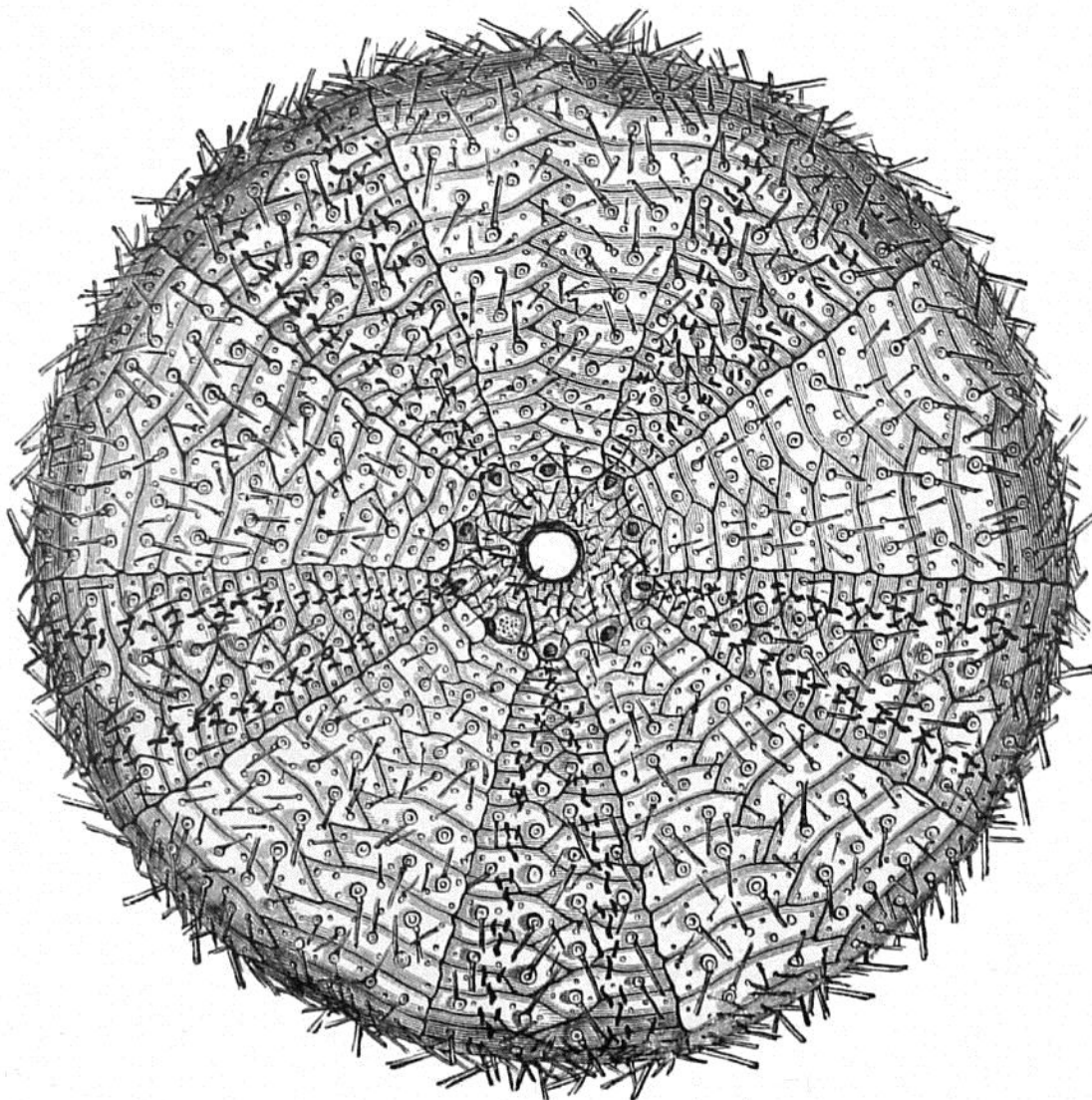


FIG. 34.—*Phormosoma uranus*, WYVILLE THOMSON. Apical surface. Natural size. (No. 6.)