

The male example figured (Fig. 27), which is 103 mm. in length, was taken in lat. $1^{\circ} 22' N.$, long. $26^{\circ} 36' W.$, a little to the east of St. Paul's Rocks, where the depth was 1500 fathoms.

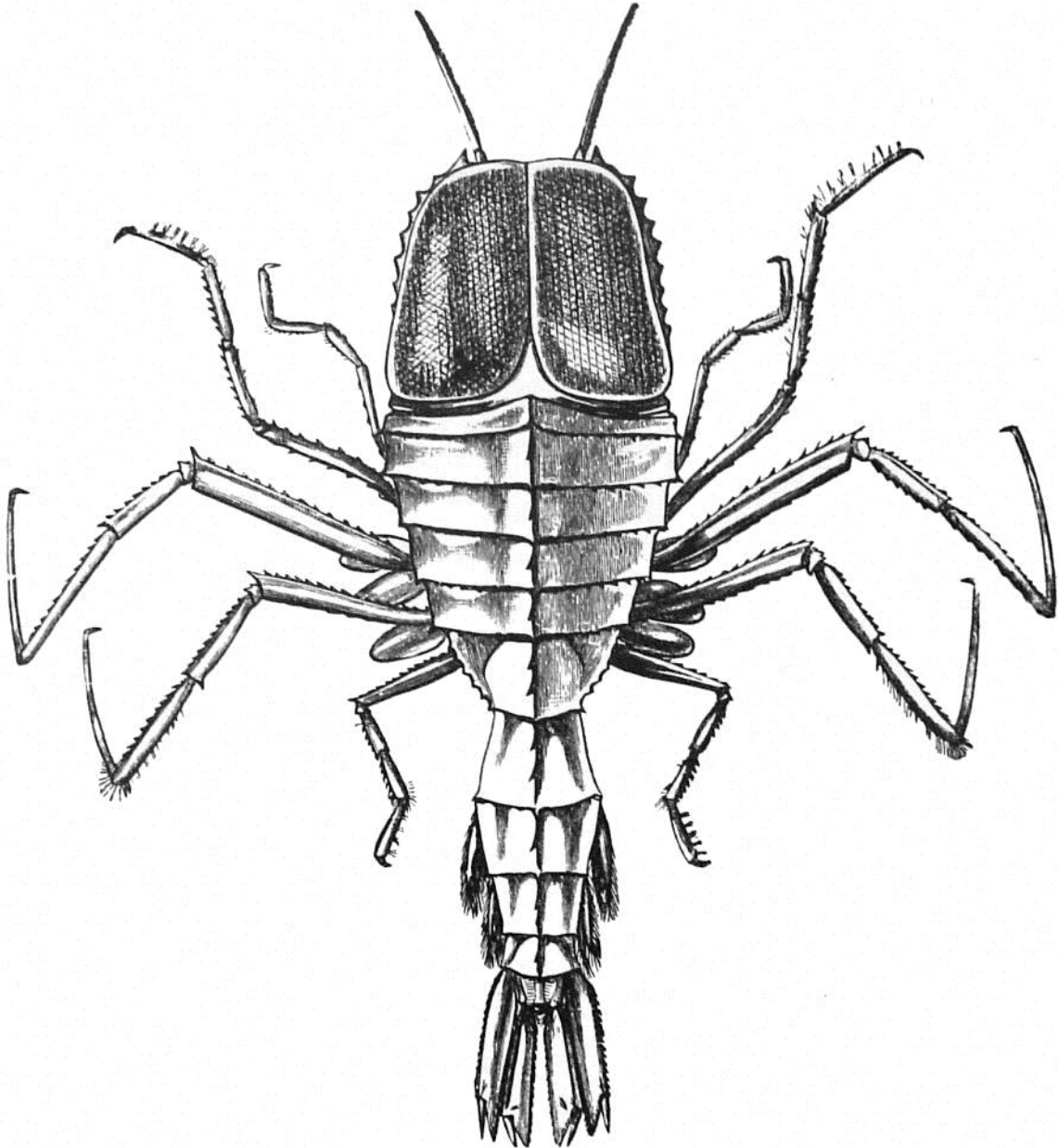


FIG. 27.—*Cystosoma Neptuni*, GUERIN-MÉNEVILLE. Slightly reduced. (No. 107.)

The animal presents a very remarkable appearance. It is absolutely colorless and transparent, so that by transmitted light the internal organs can be perfectly seen through the test—the cephalic ganglion with the nerve-fibres running to the antennæ and the eyes; the ganglia of the double ventral cord with the filaments passing to the appendages; the heart, an