

more so towards the distant ends, where the tubes contract slightly to an open orifice. At the proximal end, at the junction between the tube and the sponge body, there is also a contraction, and a slight pit-like involution of the surface of the sponge. There is something very characteristic in this pecu-

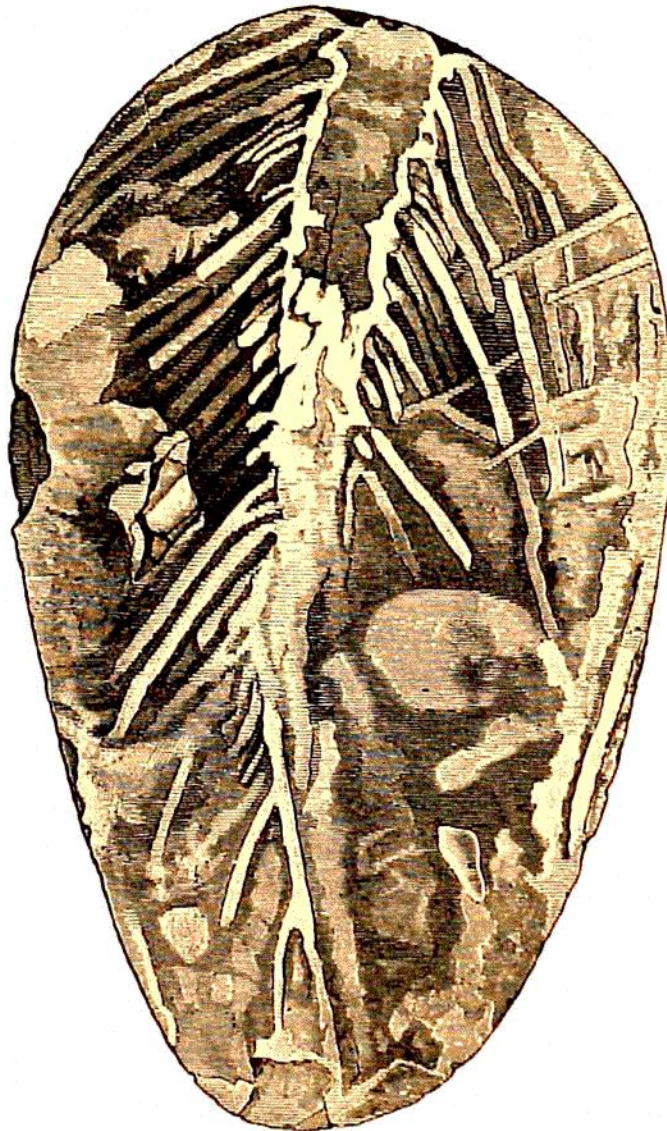


FIG. 84.—'Choanites.' In a flint from the white chalk.

liar form of junction which it is not easy to define, but which almost forces the conviction that there is the closest relation between these recent forms and tube-bearing fossil sponges such as *Choanites*.

Professor Martin Duncan mentions several corals