

of 'spicules of the sarcode,' one large, C-shaped, the other much more minute, answering to Bowerbank's 'tridentate equianchorate' type; every now and then

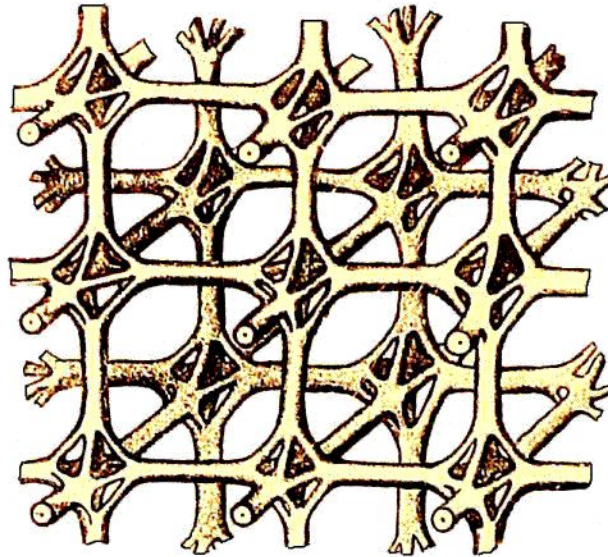


FIG. 82.—*Ventriculites simplex*, TOULMIN SMITH. Section of the outer wall, showing the structure of the silicious network. (x. 50.)

the rind thus formed coming to the margin of a small pore. The interior of the sphere is filled with soft semi-fluid sarcode, supported by the loosest possible

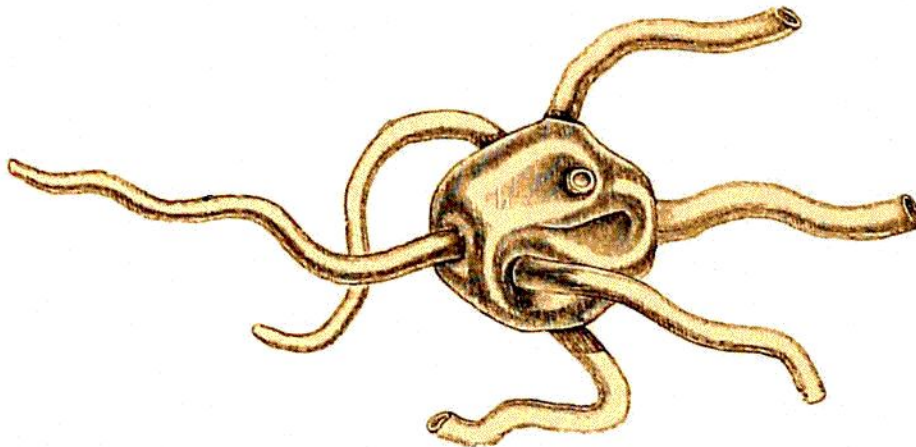


FIG. 83.—*Calosphæra tubifer*, WYVILLE THOMSON. Slightly enlarged. Off the coast of Portugal.

mesh-work of granular horny matter and pin-headed spicules. From points apparently irregularly placed on the surface of the sponge, tubes about 3 mm. in diameter run out in all directions; the walls of the tubes are thin and delicate, being