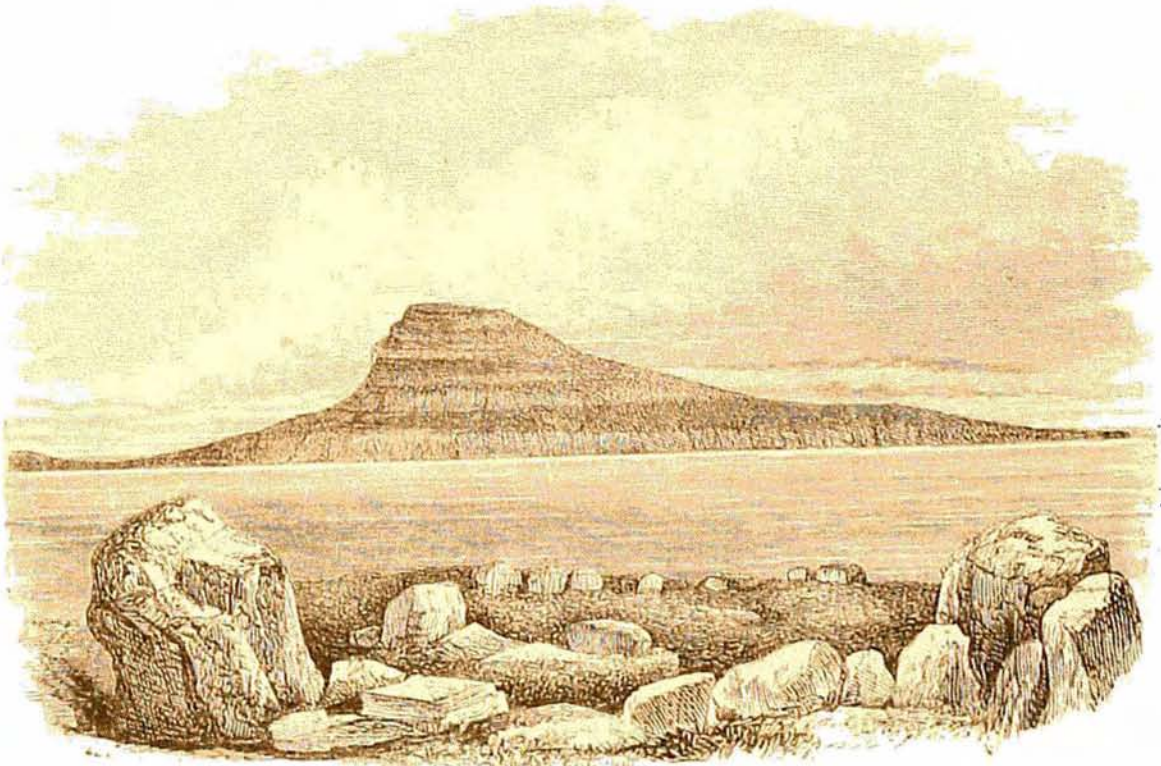


the level of the plateau a height of 16,206 feet (2,701 fathoms), a little more than the height of Mont Blanc above the sea-level.

Accurate soundings are as yet much too distant to justify anything like a detailed contour map of the bed of the Atlantic, and such a sketch as the one here given can only be regarded as a first rough draft. Nothing, however, can give a more erroneous or exaggerated conception of its outline than the ideal section in Captain Maury's 'Physical Geography of the Sea,' although it is in a certain sense correct.

According to our present information, we must regard the Atlantic Ocean as covering a vast region of wide shallow valleys and undulating plains, with a few groups of volcanic mountains, insignificant both in height and extent, when we consider the enormous area of the ocean bed.



NOLSÓ, FROM THE HILLS ABOVE THORSHAVN.