

perisom. The plates of the disk are soldered together, so as to form a close mosaic (*μυσείον*). The mouth-papillæ are fused into two lines, their number being only indicated by grooves. The lateral arm-plates are united together above and below, the upper and lower arm-plates are reduced to mere rudiments, and there are no tentacle pores beyond the first arm-joints.

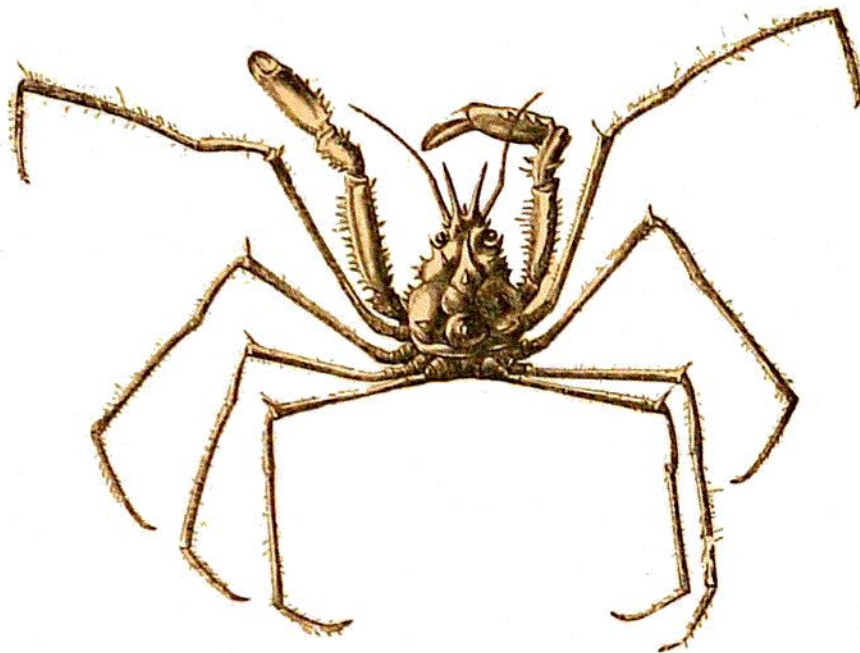


FIG. 34. — *Dorynchus thomsoni*, NORMAN. Once and a half the natural size; everywhere in deep water.

In our new species, which I name provisionally *Ophiomusium lymani*, the diameter of the disk is 28 mm., and the length of each arm 100 mm. in large specimens. The two lateral arm-plates, fused together above and below, form complete rings, their distal edge notched on each side for the insertion of seven arm spines, of which the lowest is much longer than the rest. The dorsal arm-plates are small and diamond-shaped, let in between the lateral arm-plates at the distal end of their upper line of